

AXEL CONVERTER STUDIO

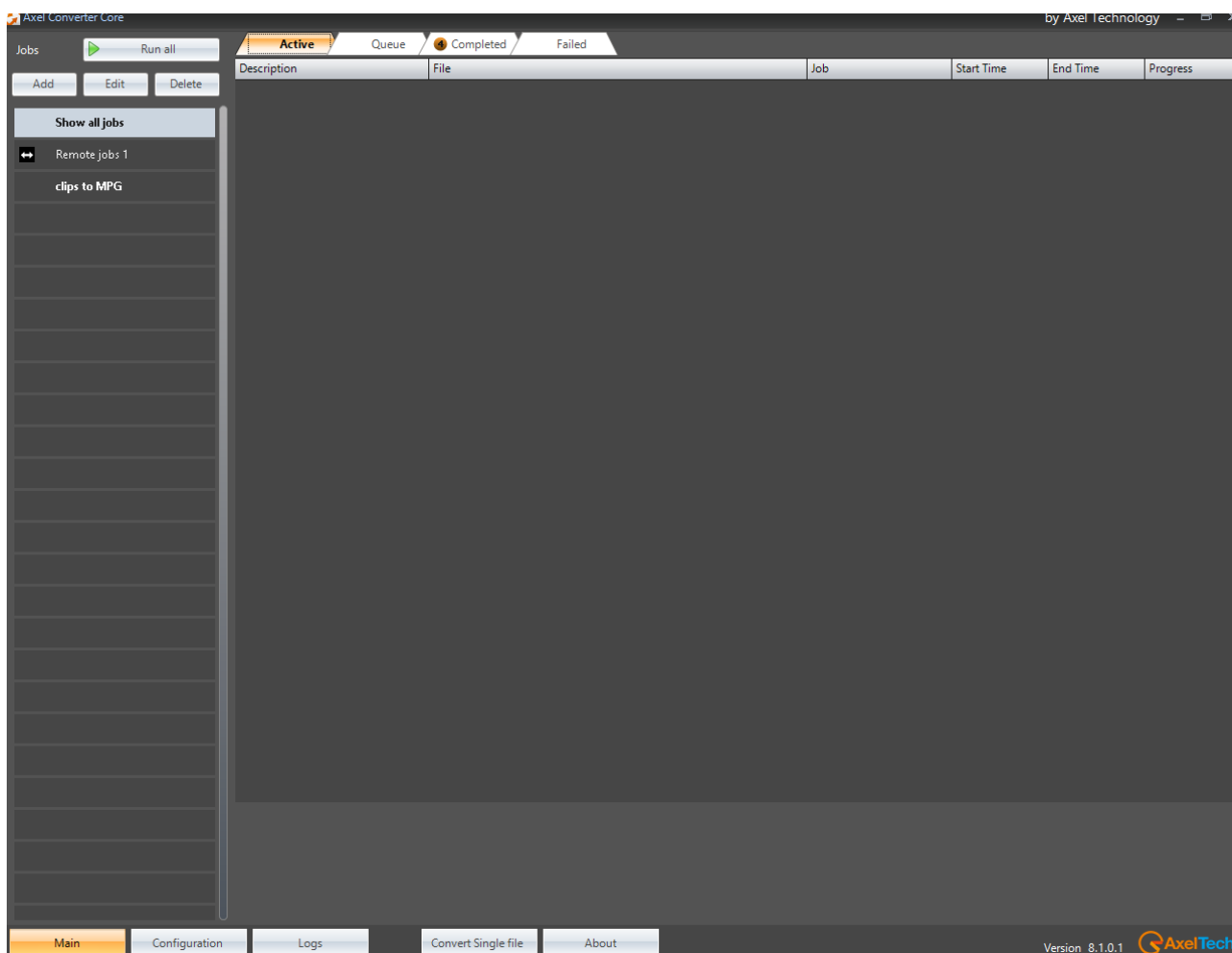
(Rev. 1.3)

CONTENT

1	INTRODUCTION.....	3
2	INSTALLATION.....	4
3	FEATURES.....	6
4	MAIN.....	7
4.1	JOB.....	7
4.2	WORKFLOW.....	8
4.3	CONVERT SINGLE FILE.....	8
4.4	CONVERSION PROFILES.....	9
4.4.1	PARAMETERS.....	10
5	CONFIGURATION.....	11
5.1	GENERAL.....	11
5.2	SNMP.....	11
5.3	EMAIL.....	11
6	LOGS.....	12
7	FINAL CONSIDERATION AND AXEL TECHNOLOGY CONTACT.....	13

1 INTRODUCTION

Axel Converter Studio is the software for the conversion of media files into different formats.

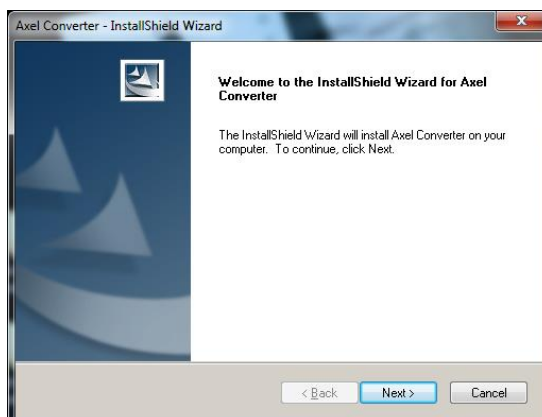


The software GUI is divided into three different sections:

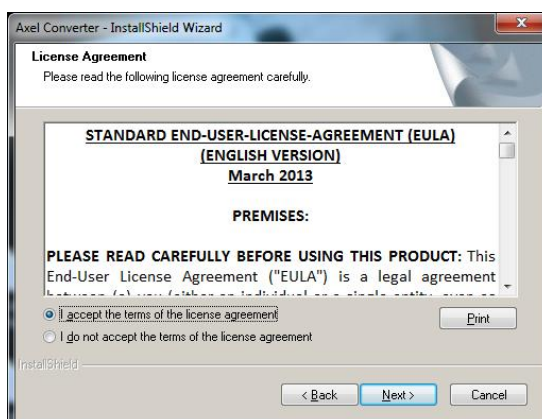
- In the **Main** Panel you can manage the conversion procedures.
- The **Configuration** Panel collects all the Axel Converter main settings.
- The **Logs** Panel allows you to browse into program logs.

2 INSTALLATION

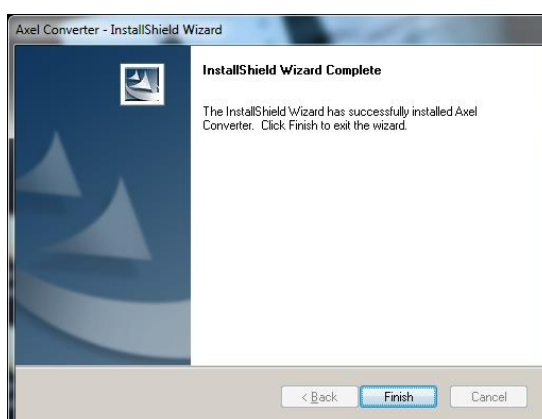
Run the *AxelConverterSetup.exe* installation file to start the InstallShield Wizard



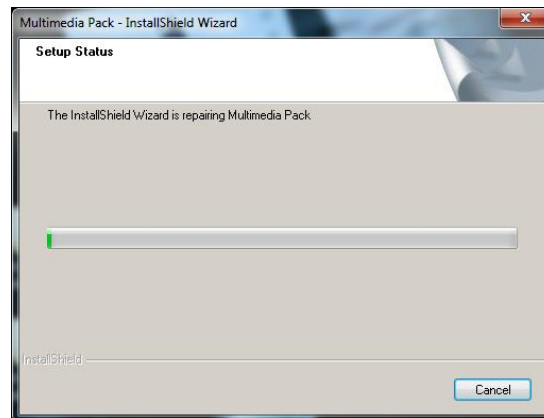
Click on *Next>*, read carefully the End User License Agreement (EULA) before accepting the terms, then click again on *Next>* to proceed with the installation. Confirm the message box to “agree to the list of EULA’s provisions in Exhibit A”. You can then open the License Agreement document at any time by clicking on the **[License Agreement]** button that you will find in Axel Converter’s **About** section.



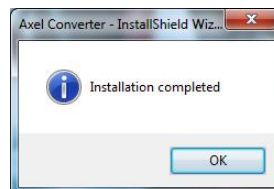
Click on *Install*, then wait for the InstallShield Wizard to complete the installation. Click on *Finish* to exit the first part of the wizard



Now the Wizard will start installing the **Multimedia Pack**, that is the collection of codecs and applications which will be used by Axel Convert Studio to perform the conversions

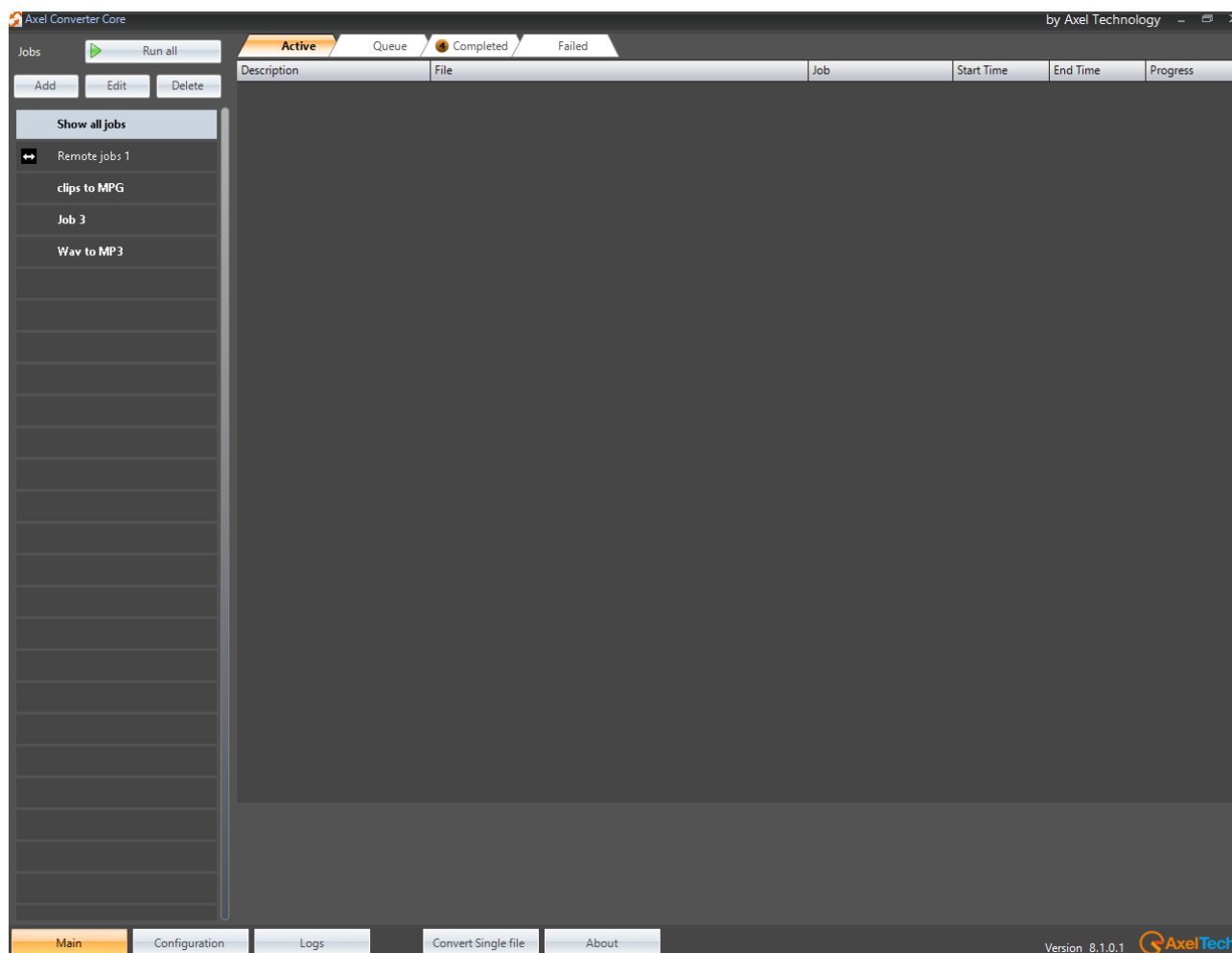


A message will appear at the end of the installation, click on OK to confirm.



3 FEATURES

When you open Axel Converter Studio, the work area appears:



This is the Main page of the program.

The list of the conversion processes (called *Jobs* profile) is shown.

The big area on the right will display the list of *Active* conversions, *Queued* conversions, *Completed* conversions and *Failed* conversions, according to the tab selected on the top.

On the bottom, the main menu allows you to open the Main page, the Configuration panel, the Logs browser, a function for the manual conversion of a single file, and the About window with all the software info.

4 MAIN

4.1 JOBS

The Jobs are process profiles of file conversions. You can run or stop all the Jobs by clicking on the **Run all/Stop all** button on the top left. It is not possible to run or stop only single process or some selected Jobs. All the Jobs could be runned or stopped simultaneously.

NOTE: all of Jobs have to be stopped before to add a new Job profile or to edit and to delete an existing one.

If you want to add a new Job, click on the **[Add]** button, the *Watchfolder* window will appear:

Insert a **Name** for the new Job.

Select the **Source Folder** of the files to be converted.

Select the **Conversion Profile** among the available ones.

Select the **Destination Folder** where the converted files will be saved.

Select the **Failed Folder** where the files with failed conversion processes will be moved into.

Select the **Temp Folder** where the files are moved during the conversion.

in case of contemporary jobs, it is possible to set for a Job Profile **Priority**, to establish a conversion order.

If you select the **Auto Overwrite Existing File** option, the Job will overwrite the old file in the *Destination Folder* with the same file name, otherwise the new file will not be converted, will be moved into failed and the old converted file will be kept in *Destination Folder*.

Click on **[OK]** to confirm the new Job Profile insertion. Click on **[Cancel]** if you want to close the adding window without any changes.

To modify an existing Job Profile, select it from the left-list and click on **[Edit]** button, the *Watchfolder* window will appear. Set all the parameters as already explained for the new profile insertion.

To delete an existing Job, select it from the left-list on the left and click on **[Delete]** button.

A special **Remote Jobs** profile already configured is always viewable. It is remotely controlled and cannot be deleted from the Job Profile list.

This special Job Profile receives the folders parameters (source folder, destination folder,...) by some default http REST API commands sent by any web browser or by dedicated REST API software for command management. A single job at a time could be runned by REST command.

To modify the Remote Jobs profile, select it from the left-list and click on **[Edit]**, the *Remote Controlled Worker* window will appear:

You can customize the **Name** for the Remote Job.

Select the **Conversion Profile** among the available ones.

Optional, you can set a Job **Priority**, to establish a conversion order between multiple Job Profiles.

All the other parameters usually present in a standard Job Profile are managed by the external REST API commands which control this Remote Job profile.

To access to working REST API command list, go to **[CONFIGURATION] > [GENERAL]** tab, and click on the blue link to be automatically directed to the right list page.

Here you will find the correct commands syntax. Copy the desired command and paste it into your browser by paying attention to fill into braces the desired and customizable parameters.

4.2 WORKFLOW

By clicking on **RUN ALL**, all the Jobs Profiles will be started:

- Each Job Profile constantly monitors its own **Source Folder**.
- When any new file is found in the Source folder, its reference will automatically appear in the *Queue* list.
- When a Job starts the file conversion process, the related temporary file is moved into the **Temp Folder** and its reference will appear in the *Active* list.
- When the Job conversion process is completed, the related converted file is saved into the **Destination Folder** and its reference will appear in the *Completed* list.
- If the Jobs face conversion issues and if the conversion will not be completed (e.g.: the source file is a non-audio file or it is corrupted), the source file will be moved into the **Failed Folder** and its reference will appear in the *Failed* list.

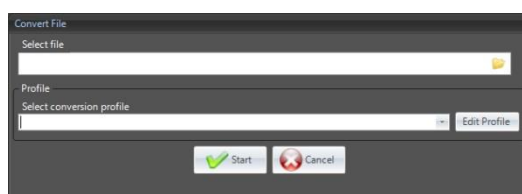
The *Completed* list and the *Failed* list are temporary, their references are automatically deleted according to the *Job auto remove days* in the Configuration panel (see next Chapter). These lists are completely cleared every time you close and restart Axel Converter.

You can decide how many files can be processed simultaneously by all Job profiles, by setting the *Contemporaneous Jobs* parameter in the Configuration panel (see next Chapter).

4.3 CONVERT SINGLE FILE

You can also perform the conversion on a single file using a temporary Job.

To set it and start it, click on the **[Convert single file]** button at the page bottom, and the *Convert File* window will appear:



Select the file to be converted, select the conversion profile and click on **[Start]**, in the next window select the target folder; customize the file name or leave the default one.

A progress bar will be displayed during the conversion, when conversion completes the process a message box will appear. Click on **[Ok]** to return to the *Convert File* window.

Repeat the instructions described above if you want to convert another file, otherwise click on **[Cancel]** to close the window.

When you use this tool, the original files are not deleted from the source folder. In case of failed conversion, a failure message appears.

4.4 CONVERSION PROFILES

The rules of conversion for each Job Profile are given by the **Conversion Profile** parameter in the *Watchfolder* form. When you install the software, you can choose a default Conversion Profile from a list of presets, but you can create new ones.

NOTE: The default profiles cannot be modified or deleted.

If you want to create or customize a Conversion Profile, STOP ALL the jobs, select one of the available left Job Profiles and click on Edit.

Click on the Edit button next to the Conversion Profile field, and the *Advanced Conversion Parameters* form will appear with the current job profile parameters:

Click on **[New]** if you want to create an empty new profile, or select one from the *Profile* menu on the top and click on **[Copy]** if you want to create a new profile starting from an existing one.

Once you have set all the desired parameters (see next paragraph), click on **[OK]** if you want to save changes on the selected Profile and close the form (a message box will appear asking you to confirm the changes on the profile), or click on **[Save]** to save changes on the selected Profile without closing the form.

Click on **[Cancel]** if you want to close the form without confirming changes.

If you want to delete an existing profile, select it from the top menu and click on **[Delete]** (it does not work on the default profiles).

You can also save the profile data into an XML file through the **[Export]** button so that you will be able to import it again into your Axel Converter, or into another Axel Converter, by using the **[Import]** button.

4.4.1 PARAMETERS

File Extension: set the file extension, without dot, for the destination files (e.g.: mp3).

Force Format: forces the converted file to the selected format.

Target: (for video conversion) by selecting an option from the drop down menu, the program will automatically set the best format parameters.

VIDEO

Use this section if you need to convert video type files.

Process Video Encoding: enables the editing of the parameters for the video encoding.

Codec: enables the drop down menu for choosing which codec, among the available ones, must be used for the conversion.

You can customize the video conversion by setting the **Resolution**, the **Bitrate**, the **Framerate**, the **Aspect ratio**, the **Minimum rate**, the **Interlacing type**, the **Crop size**, the **Sync fix**, the number of **B-Frames** and the **Group Of Pictures**.

AUDIO

Use this section to set the parameters for the audio conversion.

Process Audio Encoding: enables the editing of the parameters for the audio encoding.

Codec: enables the drop down menu for choosing which codec, among the available ones, must be used for the conversion.

Channels: select 1 for Mono, 2 for Stereo.

Also set the **Bitrate** and **Sample Rate** for the audio format.

OPTIONS

Additional Parameters: you can manually set other parameters, separated by a blank space, in addition to the ones already set in the Video and Audio sections.

Speed / Threads number (0 for maximum): according to your CPU, you can decide how many threads/cores can be involved in the conversion.

Remux on end: performs the remux of the media file at the end of the conversion.

Extension Filter: you can tell the Job Profile to skip some file types when monitoring the *Source Folder* by setting their extensions, separated by a blank space, in this field. All the skipped files will be moved into the *Failed Folder*.

the box at the bottom shows the command string resulting from the parameters set (e.g.: `-async 1 -acodec mp3 -ac 2 -ab 256k -ar 44100`)

5 CONFIGURATION

Clicking on the Configuration button you access the panel for Axel Converter's main settings

5.1 GENERAL

Automatically play at startup: by checking this parameter, all the Job profiles automatically start when you run the program.

Contemporaneous Jobs: set the maximum number of conversions that can be performed by all the Job profiles at the same time.

Complete jobs auto remove days: the software checks the *Completed* list and automatically deletes for all the jobs older than the set days.

API Port: set the REST API command reception port (default is 8090).

5.2 SNMP

Enable SNMP trap: enables for SNMP trapping to be sent to another specified device.

Ip Address: IP address of the desired device at which trap has to be forwarded to.

Port: SNMP trap communication port

5.3 EMAIL

Enable Email: allows the program to send e-mail trapping.

Address: type for the trap target email address

Use Gmail: check this parameter if you are using for a Gmail account.

Host: SMTP server address of your e-mail provider.

Port: port at which the trap has to be sent through

Username: set the username of your e-mail account.

Password: set the password of your e-mail account.

6 LOGS

The LOGS panel lets you browse, day by day, the program logs. When you open the panel it shows you the current day log.

The red highlighted days in the top-left calendar are the ones containing log data. From the calendar select the desired day to display its available logs on the right.

The screenshot shows the AxelTech LOGS panel. On the left, a calendar for April 2014 is displayed, with days 7, 8, 9, 10, and 11 highlighted in red. Below the calendar is a 'Filters' section with checkboxes for NONE, INFO, ERROR, RECEIVED, SENT, EXCEPTION, TOPP, DEBUG, and DEBUG VERBOSE. The 'INFO' filter is selected. Below the filters is a list of log entries for 'Axel Converter'. The main area displays a detailed log entry for 'Completed conversion of 92 - The Doors - Roadhouse Blues.mp3' on 17/04/2014 at 14:16. The entry details include the source file path, the output file path, and the version number. At the bottom, there is a 'Show Logs' button and a 'Log queue count: 0' indicator.

You can filter the log data displaying by checking/unchecking the options in the left *Filters* box.

By selecting a log line, the related description will be displayed in the bottom *Show Logs* box.

7 FINAL CONSIDERATION AND AXEL TECHNOLOGY CONTACT

This image shows a single sheet of white paper with horizontal ruling lines. The lines are evenly spaced and run across the width of the page. There are no margins or other markings on the paper.

Main Office BOLOGNA: Via Caduti Di Sabbiuono 6/F
40011 Anzola Emilia - Bologna - Italy
Tel. +39 051 736555 - Fax. +39 051 736170

For Technical information or support
support@axeltechnology.com

For General information and Sales dept
Sales@axeltechnology.com

www.axeltechnology.com