

Xmusic

Music Scheduler for XTV

(Rev. 1.1 ENG)

CONTENT

1 CONFIGURATION..... 3

1.1 XMUSIC CONSOLE..... 3

1.2 XTRIMMER 3

1.3 XPLAYOUT 4

2 TRIM THE CLIPS..... 5

3 XMUSIC..... 7

3.1 CREATE A NEW MUSIC CATEGORY (GENDER)..... 7

3.2 CREATE A NEW GRAPHIC..... 9

3.3 ADD A NEW ARTIST..... 9

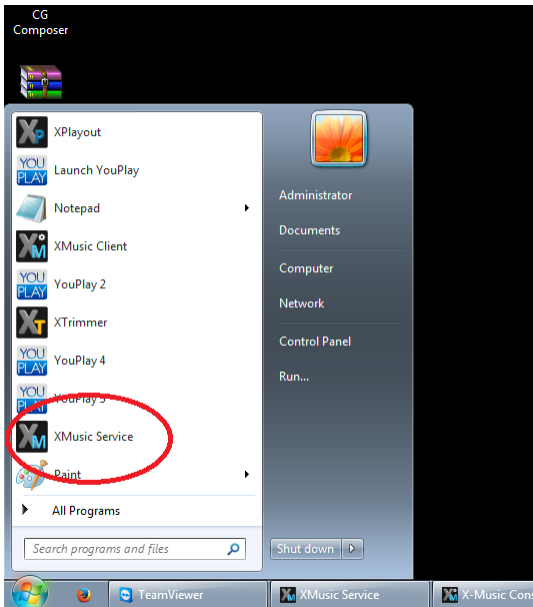
3.4 CREATE SCHEDULING RULES..... 10

3.5 SETTINGS 12

4 FINAL CONSIDERATION AND AXEL TECHNOLOGY CONTACT..... 13

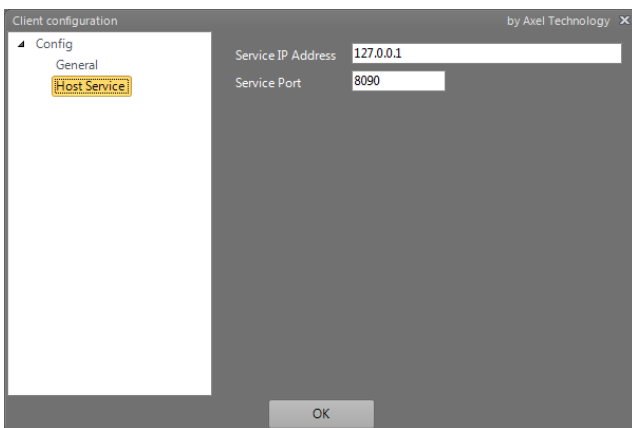
1 CONFIGURATION

Run XMUSIC service on the pc that will be the server for XMUSIC data and take note of the IP of that computer.




1.1 XMUSIC CONSOLE

Open XMUSIC Console and click **Tool** menu, then on **Settings** button, then click on **Host Service**



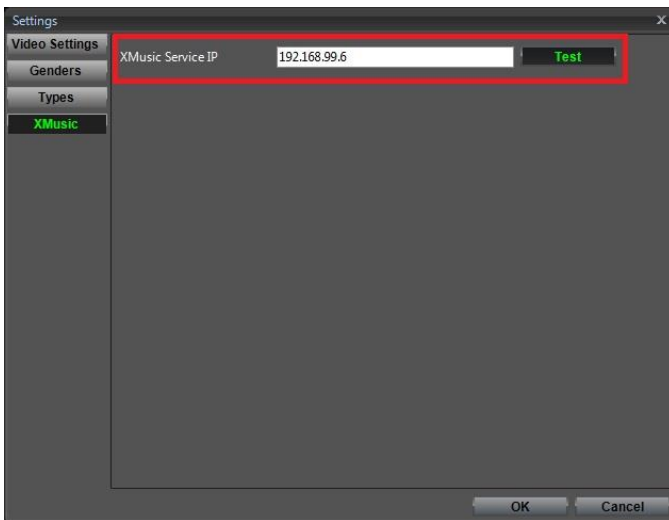
Set the IP address of the pc where XMUSIC service is installed and the port used by the service.

1.2 XTRIMMER

Open XTrimmer, then open Settings: 
Click on XMUSIC settings



Then On **XMUSIC Service IP** set the IP of the pc where XMUSIC service is installed, then click on **Test** to check if it works.

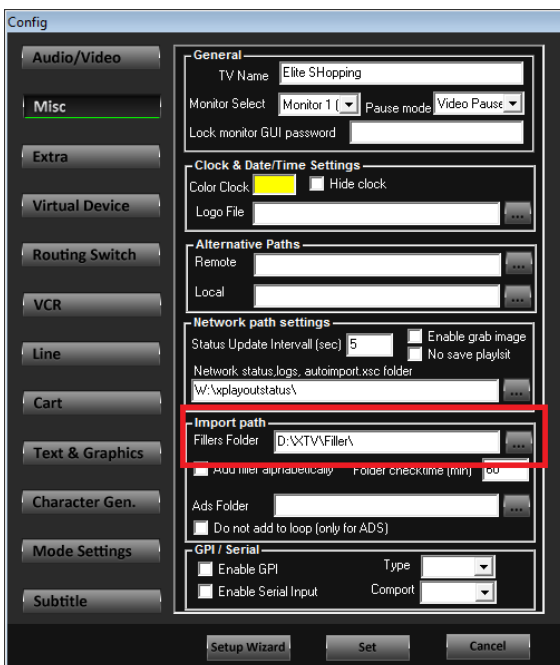


Press Ok to save settings.

1.3 XPLAYOUT

Open the **System Settings** menu

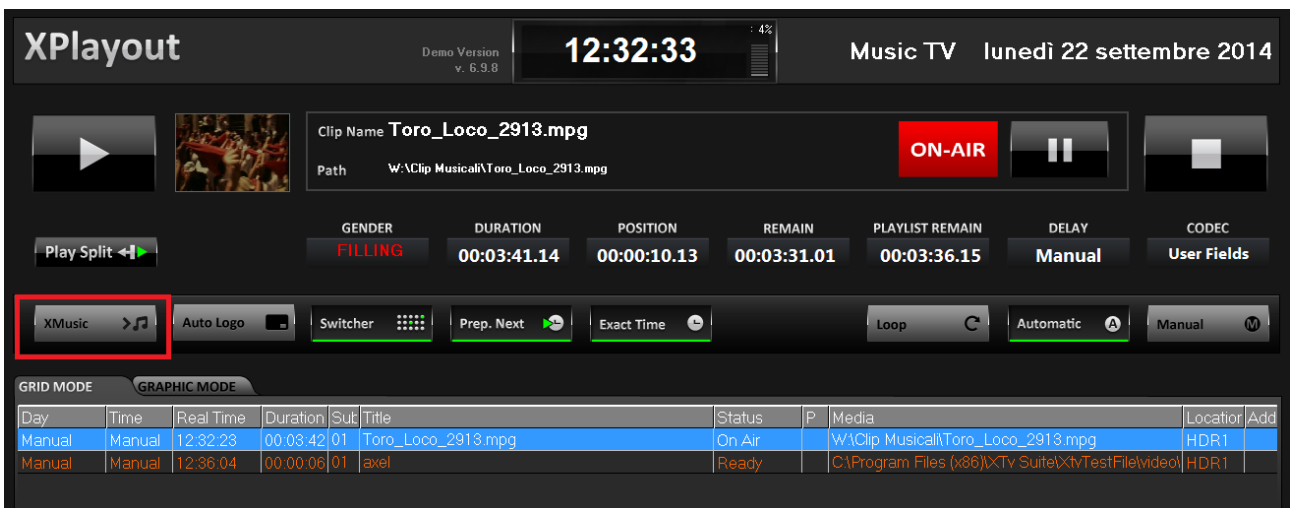
Go on the **Misc** section – **Import path** – **Fillers folder** and set the folder for the generic fillers that will be used in the absence of specific rules for that day/time.



Move to the **Mode Settings** section, enable XMusic and enter the IP of the pc where XMusic service is installed



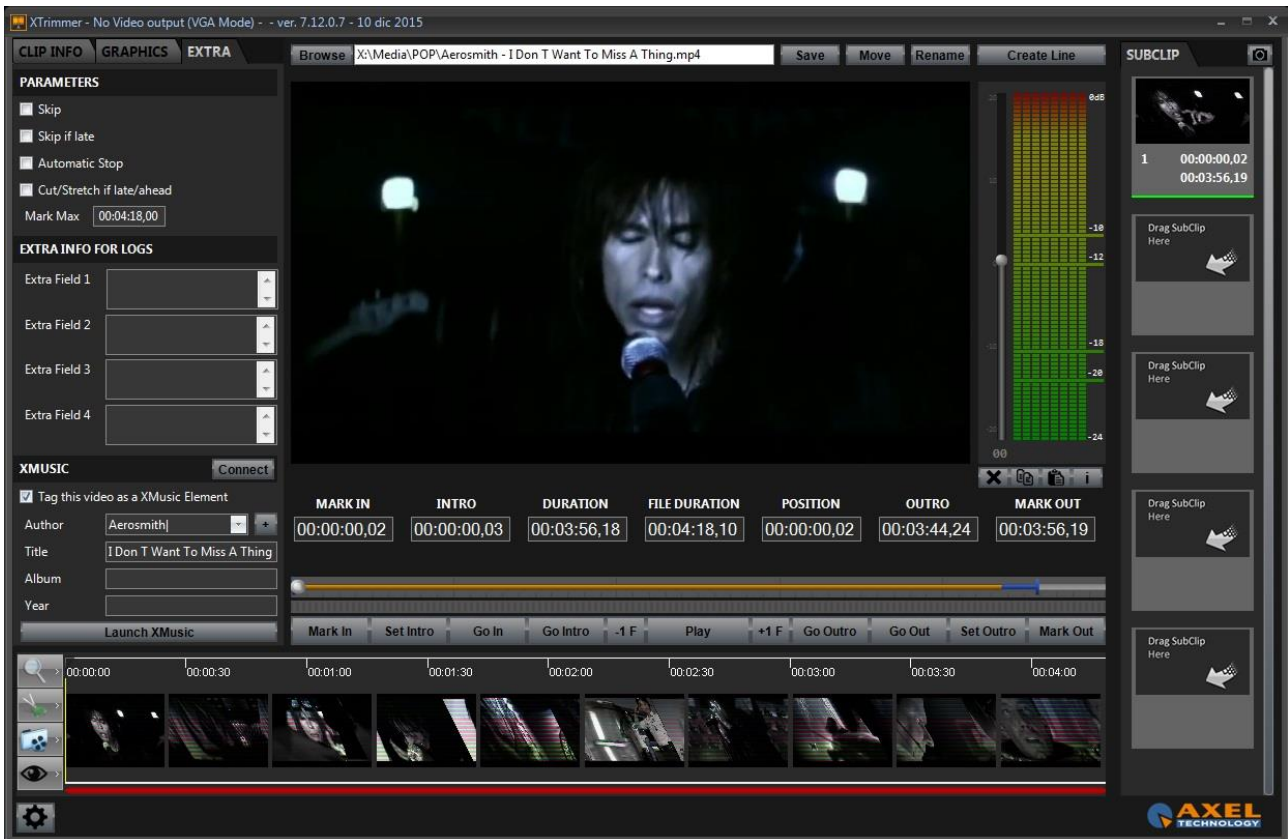
Then on Xplayout, enable **XMusic**



NOTE: The music genders configured on XMusic will be identified by the folder where the physical file is positioned. It is therefore very important to organize and name the musical clips folder in a clear and well-ordered way.

2 TRIM THE CLIPS

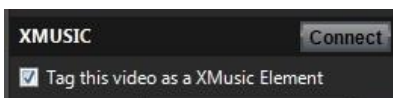
Use XTrimmer to trim and mark the clips in the same way of XTV (refer to XTrimmer manual).



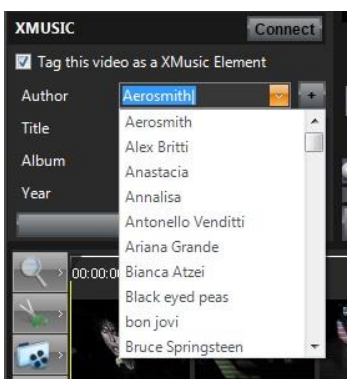
SUGGESTION: Insert all the new clips to be trimmed on a "service" folder (for example D:\import\), then move the clip into the final folder using the **Move** button
 After the clip is marked as usual, go to EXTRA



Then check **Tag this video as XMusic Element**
 Click on **Connect** to check if XMusic service is reachable.



If the author of the song was previously inserted it will be possible to select him from the list

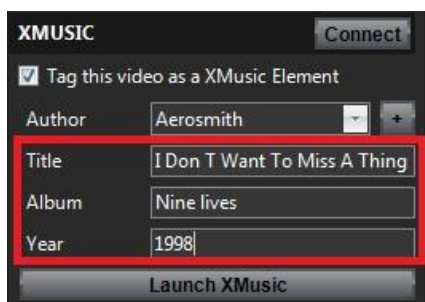


If the author is not on the list, click on the  button and just write his name on the author field



Then click on **Ok** button

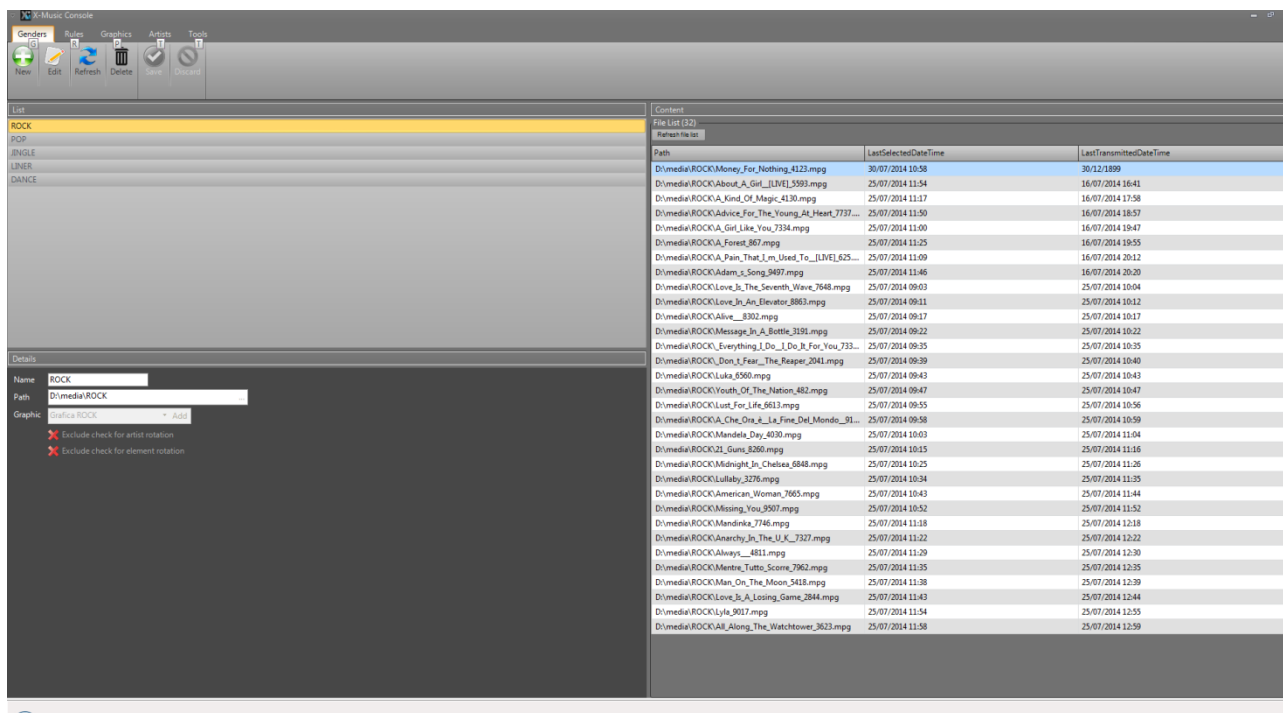
Afterwards it will be possible to set the data for CG (to manage graphics with title, album and year of the song). The suggested title is the same as the file name, but it is possible to change it.



After all the required data are inserted, save the clip with **Save** button.

3 XMUSIC

To open XMUSIC console, run the software from the link (from windows start menu or from the desktop icon) or run it from the **Launch XMUSIC** button from the **XMUSIC info** window of XTrimmer.



3.1 CREATE A NEW MUSIC CATEGORY (GENDER)

Click on the **Genders** menu



Click on **New**
It will open the **Details** window to add a new gender

On the **Name** field enter the name to be assigned to that gender.
On the **Path** field enter the path of the folder that will contain all the clips that belong to that gender.
Example: gender ROCK, path D:\MEDIA\ROCK\
On **Graphic** field enter (if required) the graphic to be associated to that gender.
Exclude check for artist rotation if selected it will ignore the check that avoids the author repetition before 2 hours
Exclude check for element rotation if selected it will ignore the check that avoids the element repetition before 4 hours



Click **Save** to confirm the creation of the new gender



To modify a gender use the **Edit** button



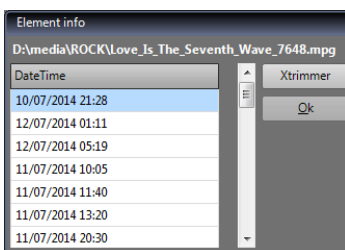
To delete a gender use the **Delete** button

To visualize the settings of a gender and the content of the folder linked to that gender, just choose the gender from the list suggested on the **Gender** menu.

- | List |
|--------|
| ROCK |
| POP |
| JINGLE |
| LINER |
| DANCE |

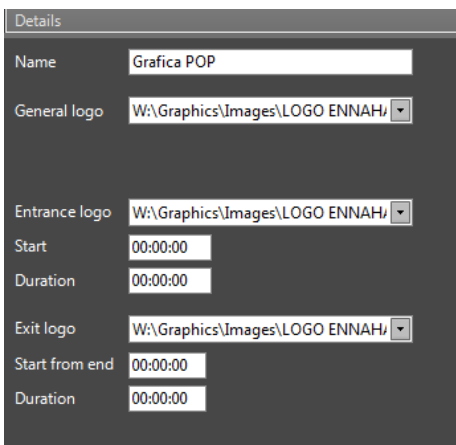
Path	LastSelectedDateTime	LastTransmittedDateTime
D:\media\ROCK\Money_For_Nothing_4123.mpg	30/07/2014 10:58	30/12/1899
D:\media\ROCK>About_A_Girl__[LIVE]_5593.mpg	25/07/2014 11:54	16/07/2014 16:41
D:\media\ROCK\A_Kind_Of_Magic_4130.mpg	25/07/2014 11:17	16/07/2014 17:58
D:\media\ROCK\Advice_For_The_Young_At_Heart_7737....	25/07/2014 11:50	16/07/2014 18:57
D:\media\ROCK\A_Girl_Like_You_7334.mpg	25/07/2014 11:00	16/07/2014 19:47
D:\media\ROCK\A_Forest_867.mpg	25/07/2014 11:25	16/07/2014 19:55
D:\media\ROCK\A_Pain_That_I_m_Used_To__[LIVE]_625....	25/07/2014 11:09	16/07/2014 20:12
D:\media\ROCK\Adam_s_Song_9497.mpg	25/07/2014 11:46	16/07/2014 20:20
D:\media\ROCK\Love_Is_The_Seventh_Wave_7648.mpg	25/07/2014 09:03	25/07/2014 10:04
D:\media\ROCK\Love_In_An_Elevator_8863.mpg	25/07/2014 09:11	25/07/2014 10:12
D:\media\ROCK\Alive__8302.mpg	25/07/2014 09:17	25/07/2014 10:17
D:\media\ROCK\Message_In_A_Bottle_3191.mpg	25/07/2014 09:22	25/07/2014 10:22
D:\media\ROCK\Everything_I_Do_I_Do_It_For_You_733...	25/07/2014 09:35	25/07/2014 10:35
D:\media\ROCK\Don_t_Fear_The_Reaper_2041.mpg	25/07/2014 09:39	25/07/2014 10:40

With a double click on one of the items of the file list, it will show all the passages of the item with date and hour and it will be possible to open the clip with Xtrimmer.



3.2 CREATE A NEW GRAPHIC

To create a new graphic, just go to the **Graphic** menu and click on the **New** button



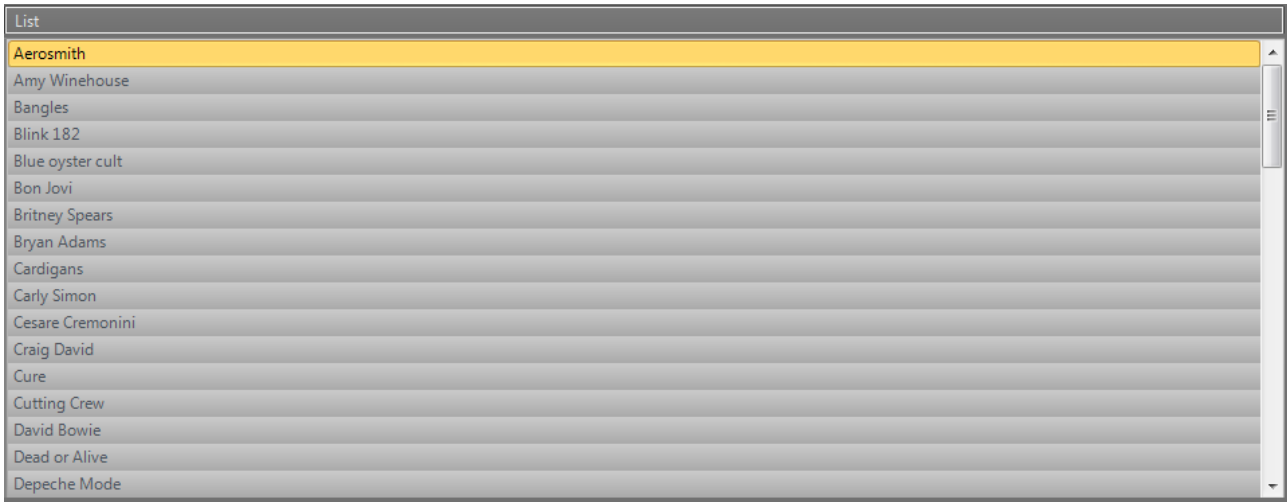
On the insertion panel that will appear, set:

- Name of the graphic
- Logo to be combined with the graphic
- Entrance logo with its start point and duration
- Exit logo with its start point (from end) and duration

Then click on **Save** to enable the graphic.

3.3 ADD A NEW ARTIST

To add a new artist, it is possible to proceed during the trim of the clip (see chapter 3) or directly on the **Artists** menu of XMUSIC.

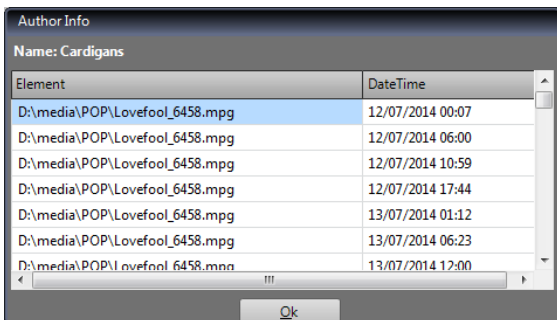


To create a new artist, click on the insert button



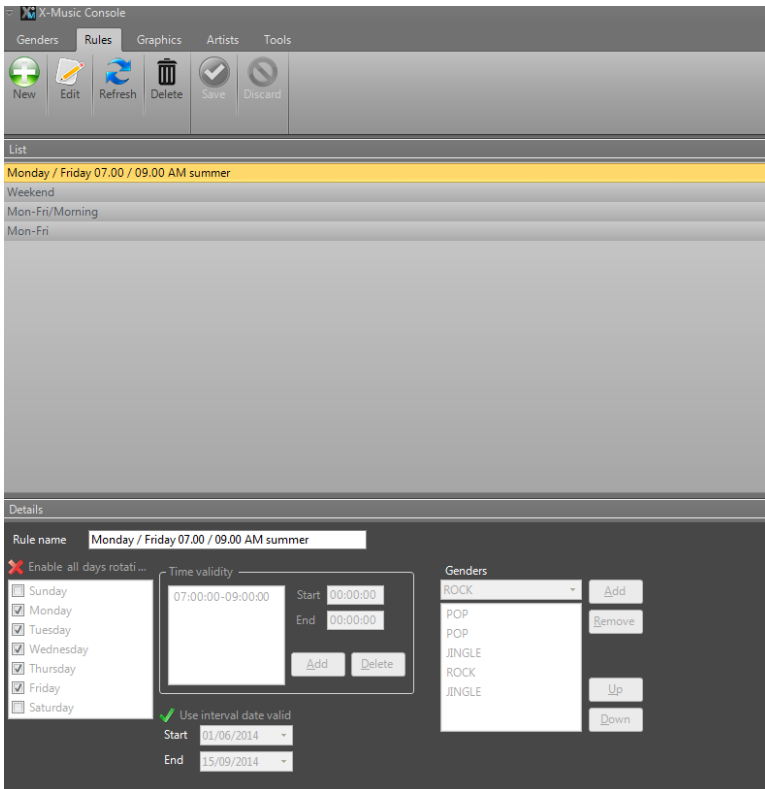
To delete an artist from the list, click on the delete button

With a double click on an artist of the list, it will show the playout history of that artist with filename, date and hour.



3.4 CREATE SCHEDULING RULES

Click on **Rules** menu to access to the scheduling rules management window.



Rule name:

Enter the name to be assigned to the rule

Sunday
 Monday
 Tuesday
 Wednesday
 Thursday
 Friday
 Saturday

Select the days of the week of validity of the rule

Time validity
 00:00:00-09:00:00 Start: 00:00:00
 13:00:00-00:00:00 End: 00:00:00

Enter the validity time lapse of the rule

Use interval date valid
 Start:
 End:

If required, it is possible to set a validity period of the rule

Genders

 LINER
 POP
 POP

Enter the genders sequence to be respected on the rule

Here the final result for this example:



To modify a rule, use the **Edit** button



To delete a rule, use the **Delete** button

3.5 SETTINGS

On **Settings – General** It is possible to set the layout theme and language

