

YOULOGO

Software Logo Generator Broadcast

(Rev. 1.1 ENG)



SUMMARY

.....	1
1 INTRODUCTION	3
1.1 WHAT IS YOULOGO?	3
1.2 WHY YOULOGO?.....	3
1.3 VIDEO OUTPUT – AVAILABLE CONFIGURATION.....	4
2 CONFIGURATION	5
2.1 RUN THE PROGRAM.....	5
2.2 PLAYOUT - MULTICHANNEL.....	6
2.3 PLAYOUT – SINGLE CHANNEL	7
2.4 COMPOSER	8
2.5 SETUP	10
2.6 SCHEDULER.....	11
2.7 LOG	12
3 TUTORIAL	13
3.1 HOW TO CREATE A CHANNEL TEMPLATE.....	13
4 RESTORE	16
4.1 PROCEDURE.....	16
4.2 YOULOGO SETUP	16
4.3 HARDWARE KEY.....	19
5 FINAL CONSIDERATION AND AXEL TECHNOLOGY CONTACT.....	20

1 INTRODUCTION

Congratulations on your purchase of Axel YouLogo, the broadcasting logo device server.

1.1 WHAT IS YOULOGO?

YouLogo is a software based solution for multichannel logo generation. It works with BlackMagic DeckLink video boards and allows you to broadcast simultaneously from 1 to 4 channels, supporting any video resolution (from SD to 4K).

For each channel, You Logo provides up to 15 different templates and a blank one customizable with a user friendly Composer. The operator could add from static logos to dynamic swf files, or animated png and tga sequences.

1.2 WHY YOULOGO?

Axel Technology's YouLogo is set as a standalone graphic logo generator. The system could receive commands from external devices for hot keys functions (MOXA boards, RS232, custom Keyboards) to load and play multiple pages.

The simple Composer platform gives you a wide range of possibilities to set position, transparency, static effects (blur, glow, shadow, ecc) and in & out transition effects for each object.

The interactive Axel YouLogo engine allows to switch from different templates always in a blend mode (without cut) recognizing same elements and adding just new ones. This smart solution permits infinite* layers of graphic. Web interface for simple configuration and management.

* It depends on the PC hardware performance.

1.3 VIDEO OUTPUT – AVAILABLE CONFIGURATION

iVGA

- 1 - Channel 1
- 2 - Channel 2

- Enter here the name of your channel
- Set a resolution for the video output
- Customize fields' order

Extreme 4K video card:

- 1 - Channel 1
- 2 - Channel 2

- Enter here the name of your channel
- Set a resolution for the video output
- Define Key Mode: external, internal, off
- Set TCP Port for remote control.

YOU LOGOPlus could be remotely controlled by automation software such as Axel Technology's XTV, DigiTV and third-party systems.

2 CONFIGURATION

YouLogo requires only the manual insertion of a standard format for the Blackmagic video card installed on your PC. The program will automatically set the format for all Blackmagic's output channels.

After that, you can set a different format which suits your needs for each channel.

For each BlackMagic channel installed, the program will automatically create 5 output pages + 1 blank page with some logos set into each page.

The user can add, edit or delete individual logos for each page at any time.

2.1 RUN THE PROGRAM

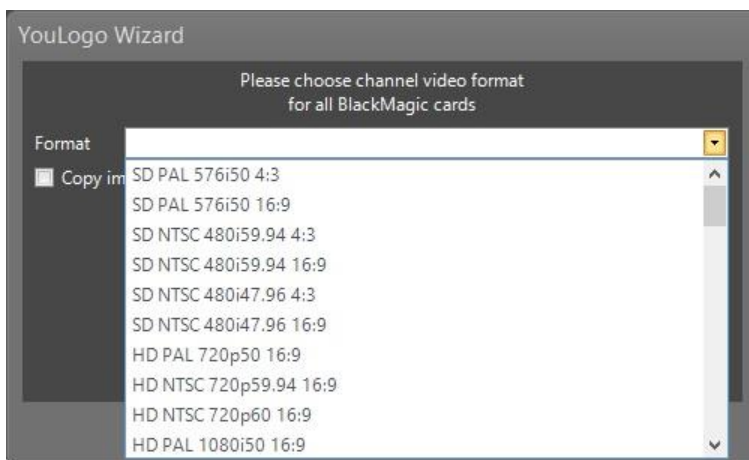
Please, start the "YouLogo.exe" file:



WARNING:

If you don't have any BlackMagic video card installed into your PC, an error message will appear and YouLogo will close.

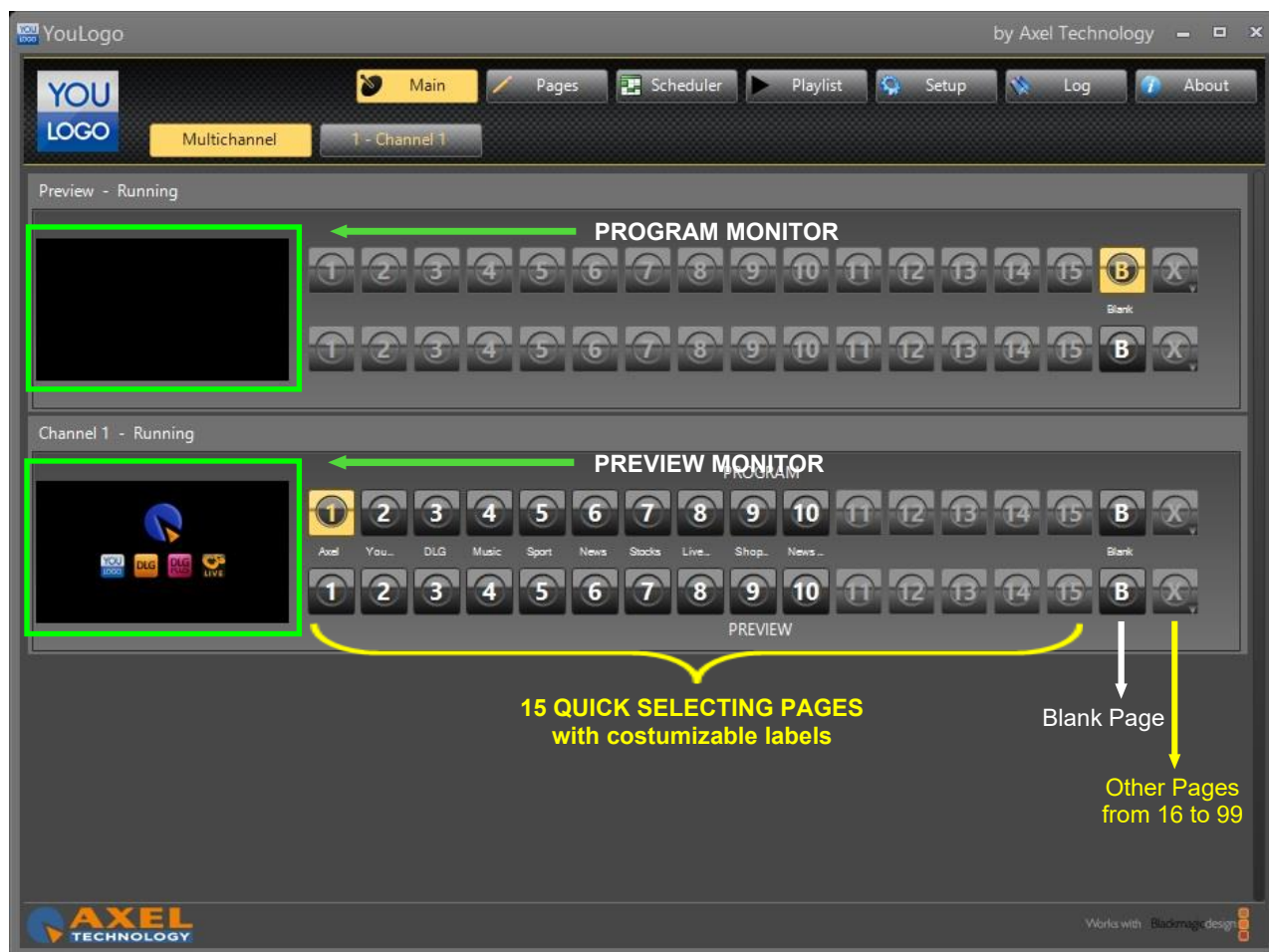
Now, you must choose a BlackMagic supported format from the list:



After that, click on "OK" button and wait until the program finishes to set all the necessary configurations. When YouLogo configuration has finished, the main program screen will appear.

2.2 PLAYOUT - MULTICHANNEL

The YouLogo's Playout Multichannel is the starting page layout. It's the summary of all the output channels set during the configuration. You will see all the supported BlackMagic video board's available channels.



Channel

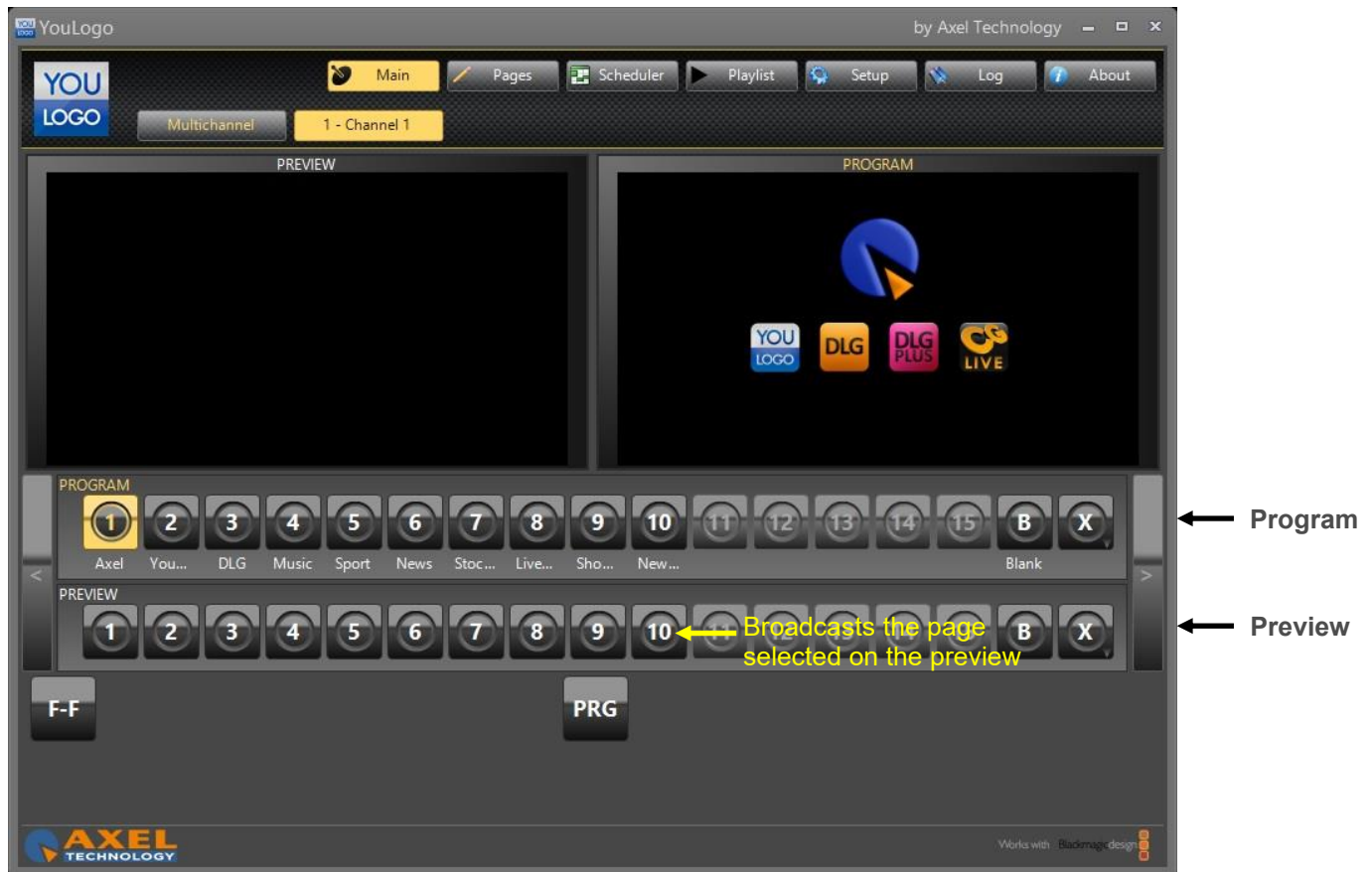
- For each channel you can choose among 15 available pages for the Program channel and 15 available pages for the Preview channel; a blank page and the last button allows you to recall all the saved pages from 16 to 99.

- The Preview channel choice is exclusive: only one Preview channel is allowed.

- At any time you can see the status of each BlackMagic channel.

It is possible to change channels' layout page simply by clicking on the available page you want to send to output.

2.3 PLAYOUT – SINGLE CHANNEL



In addition to multichannel, the Playout menu offers a view for each channel (excluding Preview channel). Each channel shows what is going on the air in the Preview channel and also in the selected channel.

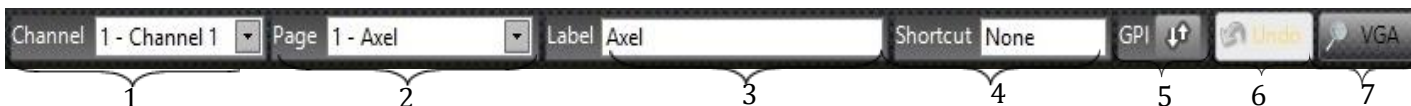
This view, compared to the Multichannel one, allows to read the page's description of the selected channel. In this way it is easier to remember what page is on the air.

It is possible to change channels' layout page simply by clicking on the available page you want to send to output.

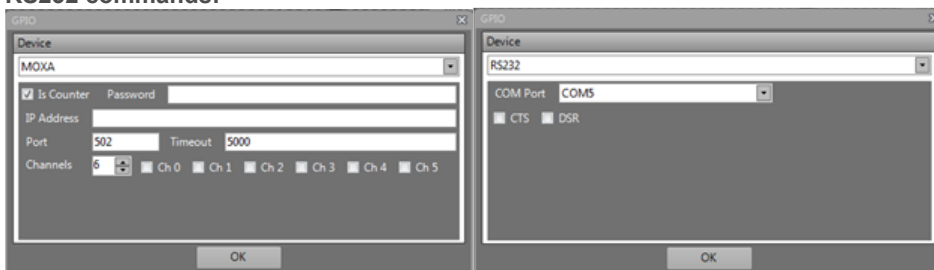
2.4 COMPOSER



The Composer page is used to create or edit output's pages for each channel. It is possible also to see the changes made to the temporary page with the buttons "Take Preview" (on the Preview channel) and "Take Program" (on the current channel).



- 1 Choose and select the available channels.
- 2 Select the page you want to modify.
- 3 Insert a "Title" for the selected page.
- 4 You can add a key combination to recall the page from the keyboard when you are on the "main" section.
- 5 You can add a GPI device to select the page. YouLogo accepts commands from MOXA boards and RS232 commands:



- 6 You can undo the last changes you did on the channel
- 7 You can have a preview of logos in the video playout

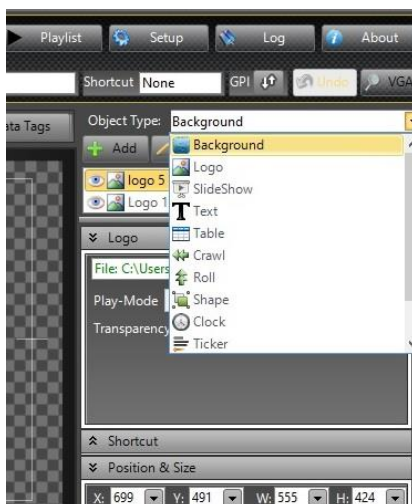
Any changes to the page can be undone using the "UNDO" button, or saved by the "SAVE" one. In addition, you can see real-time changes to the page without saving, using "Take Preview" and "Take Program" buttons.



- 1 Remove all the objects from the page. A pop-up will appear to confirm the operation.
- 2 You can import a composition from other pages using a quick selection pop-up

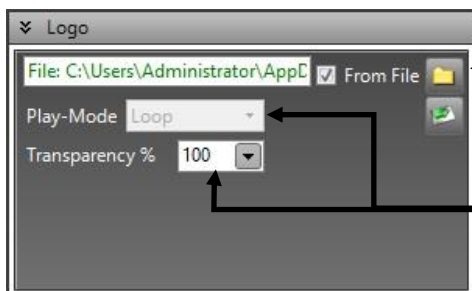


- 3 Import Axel Cg File (*.acg), such as pages that have been created and exported previously.
- 4 Save page changes in Axel Cg File (*.acg)
- 5 Save and name your page
- 6 Here you can find every path of the data you inserted



Objects you can import into the project.

The supported file types are: *.tga, *.swf, *.bmp, *.jpg, *.gif, *.png

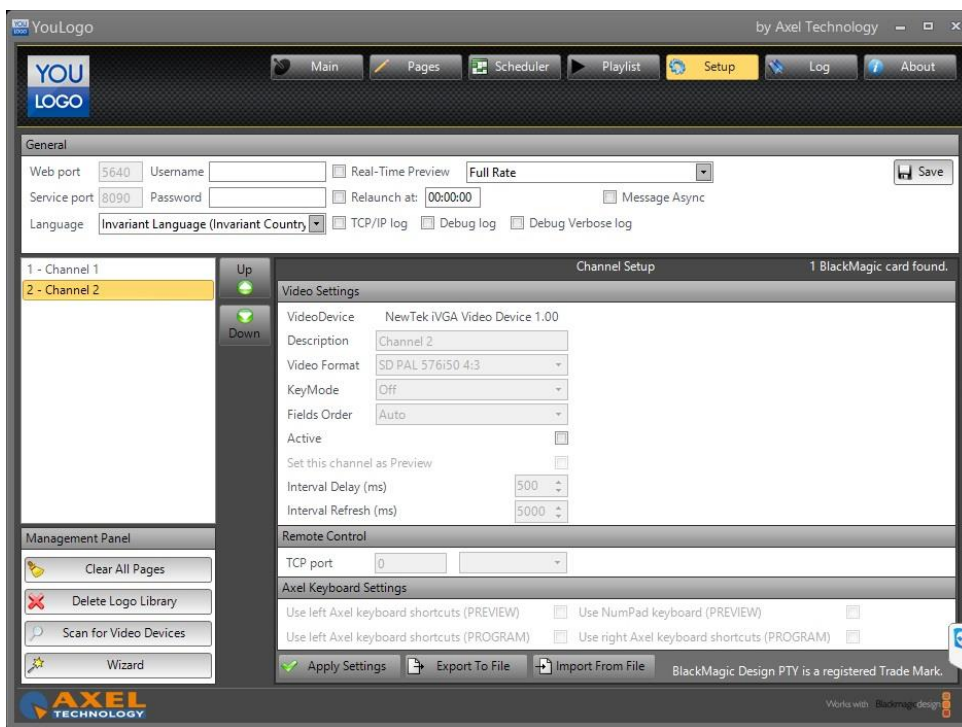


Browse to find an image or an animation to insert into the composition. The supported file types are: *.tga, *.swf, *.bmp, *.jpg, *.gif, *.png

Give a look to the logo before uploading in your page

Set properties for the animation and opacity on screen.

2.5 SETUP



In the left list of the Setup page, you can choose the channels order by clicking on “Up” and “Down” buttons. In the rest of the Setup page you can change the selected channel properties:

- Description:** it is the channel’s description. User can distinguish each page from the others by setting this property.
- Format:** the channel’s resolution and aspect ratio. User can choose from all the supported BlackMagic format video resolutions.
- KeyMode:** the channel’s output mode. User can choose between off, internal or external mode.
- Fields Order:** the channel’s fields order. User can choose between Auto, First Field, Second Field or Progressive order.
- Active:** it sets if the channel is active. User can uncheck this property if the channel is not enabled.
- Set channel as Preview:** sets the channel to the preview channel. The User can choose to set the selected channel to be the preview channel.
- ATTENTION:** User can also choose to set all the available channels with no preview. Automatically a virtual VGA channel will be created as a preview channel.
- Remote Control:** the remote connector’s channel port. User can upgrade YOULOGO to an ALG (Advanced Logo Generator) and set the remote port to wait for remote commands from other programs such as Axel Technology’s DigiTV.
- Use left Axel Keyboard shortcuts:** it specifies whether the user can use, for the selected channel, the left keyboard of the Axel Keyboard commands shortcuts*.
- Use right Axel Keyboard shortcuts:** it specifies whether the user can use, for the selected channel, the right keyboard of the Axel Keyboard commands shortcuts*.
- Use NumPad Keyboard shortcuts:** it specifies whether the user can use, for the selected channel, the NumPad Keyboard of a standard PC Keyboard.
- Export to file:** it exports all the pages composed for the specific channel into a collection saved into a unique file - *.acgs.
- Import from file:** it imports all the pages or a specific one contained into the *.acgs file.

When you want to save the channel’s changes, click on “Apply Settings”.

* Axel Keyboard similar type:

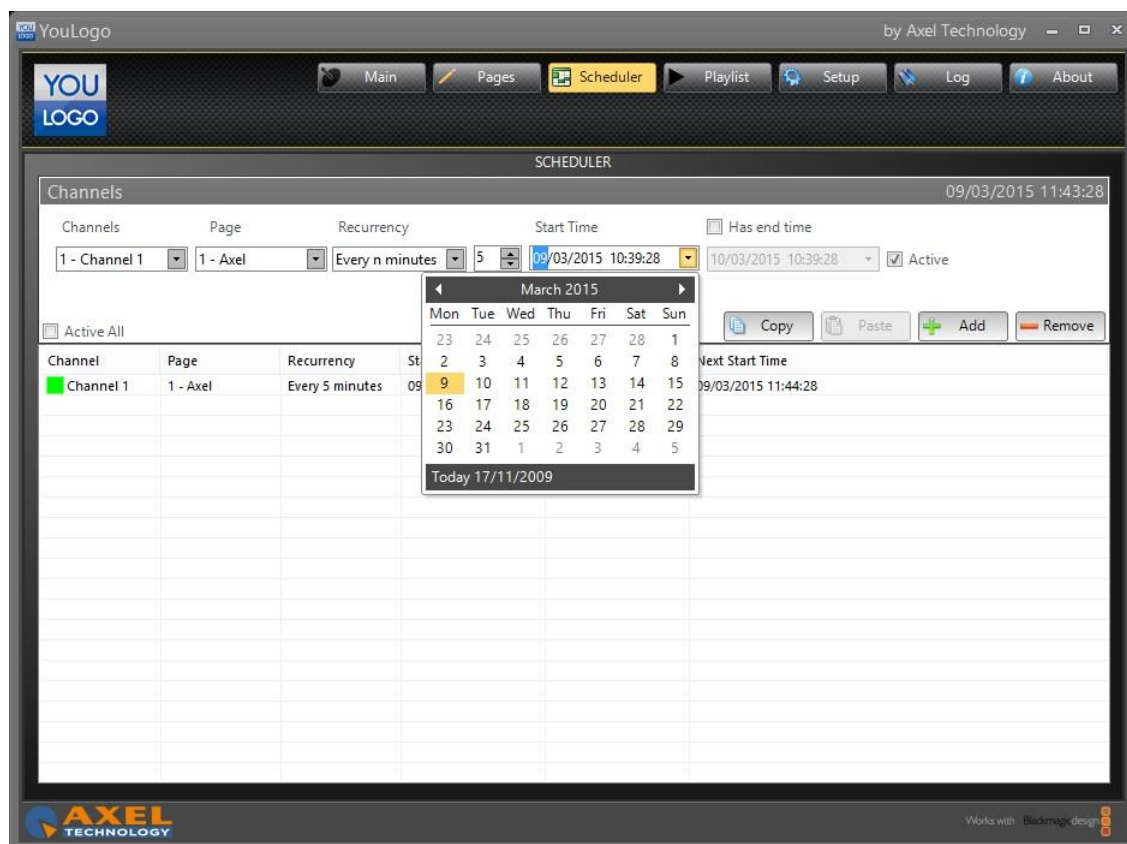


•Management Panel:

- “Clear all the pages” deletes all the pages composed for that channel. **WARNING:** You will lose all your project!
- “Delete logo library” deletes all the logos stored into the media library.
- “Scan for Video Devices” will scan your system in order to find new video devices that could be used by YouLogo.
- “Wizard” is a step-by-step configuration of the system up to your requests.

2.6 SCHEDULER

The Scheduler section allows the user to set a specific playout timing for each graphic page.



2.7 LOG

The Log page is a section that allows you to overview all the saved YOULOGO's user actions.

The screenshot shows the YouLogo application interface. At the top, there is a navigation menu with buttons for Main, Pages, Scheduler, Playlist, Setup, Log (highlighted), and About. Below the navigation menu is a 'REPORT' section. On the left, there is a calendar for March 2015, showing the current date as 09/03/2015. Below the calendar is a 'Filters' section with checkboxes for SENT, EXCEPTION, TCP/IP, YouLogo, (empty), and Preview. The main area is a log table with columns: DateTime, Application, LogType, and Message. The log entries are as follows:

DateTime	Application	LogType	Message
09/03/2015 10:46:31	Preview	INFO	Preview channel panel has been de-initialized.
09/03/2015 10:39:41	Preview	INFO	Preview channel panel has been initialized.
09/03/2015 10:39:39		INFO	Use MPlatform: False
09/03/2015 10:39:27	YouLogo	INFO	Runtime version: 32bit
09/03/2015 10:39:27	YouLogo	INFO	Application started. Version: 4.3.0.5
09/03/2015 10:39:27	YouLogo	INFO	Buildtime: 05/03/2015 17:28:20
09/03/2015 10:14:54	Preview	INFO	Preview channel panel has been de-initialized.
09/03/2015 10:14:54	YouLogo	INFO	Application closed. Reason: UserClosing
09/03/2015 10:14:49	Channel 1	INFO	Channel 1 channel panel has been initialized.
09/03/2015 10:14:49	YouLogo	INFO	Current page Page1 has been saved into the settings.
09/03/2015 10:14:06	Preview	INFO	Preview channel panel has been initialized.

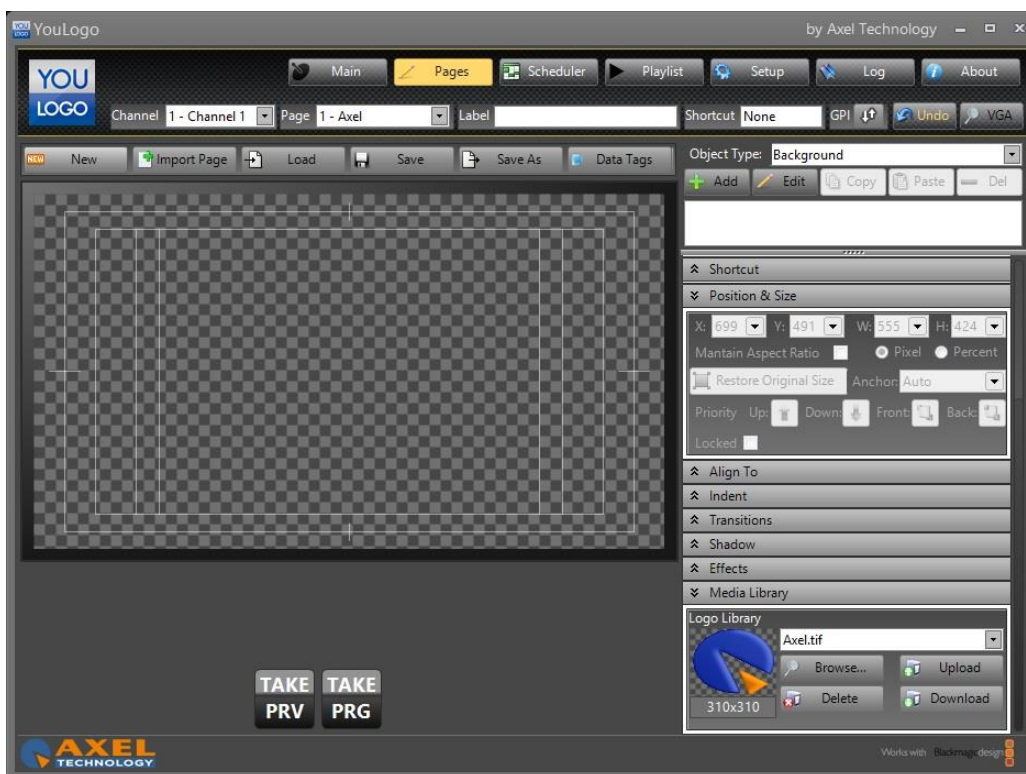
Below the log table, there is a 'Show Logs' button and a message display area showing the message: 'Current page Page1 has been saved into the settings.' At the bottom, there is an 'Events & Logs' section with a 'Log queue count: 1' and two entries: '09/03/2015 11:43:17 - KEYS: Alt+None - Alt' and '09/03/2015 11:43:28 - KEYS: Alt+None - Alt'. There is also an 'Extra Info' section with details: 'SLG (1) - Expiration: 01/12/2099 - Order #: 0 - Code: 00005158 - Customer: Macca' and a 'Refresh' button. The footer of the application shows the 'AXEL TECHNOLOGY' logo and the text 'Works with Backmap design'.

3 TUTORIAL

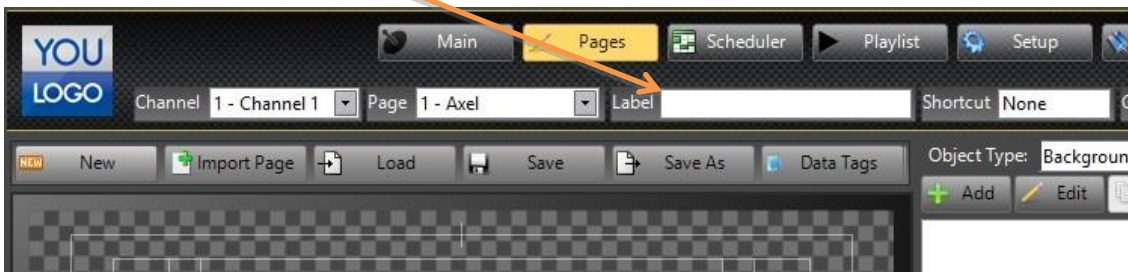
3.1 HOW TO CREATE A CHANNEL TEMPLATE



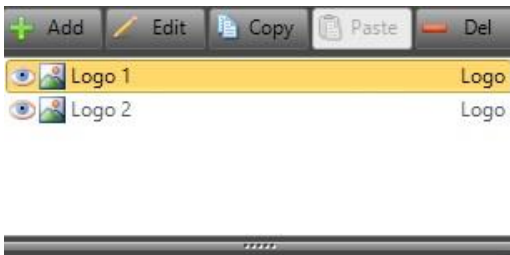
Open a new page



Type a Title into the Label Section



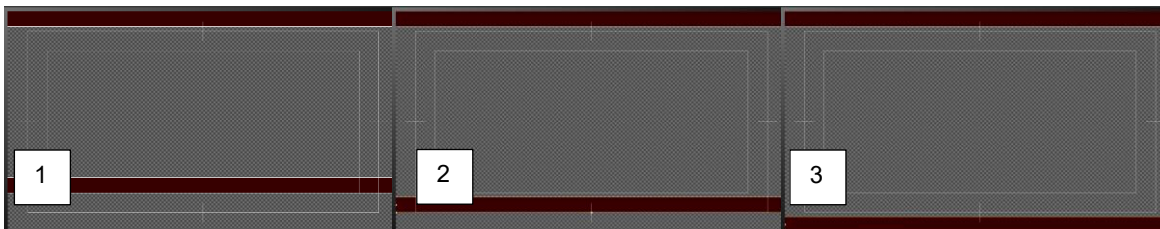
Do the same for all the objects. This will help you to keep the project well organized.



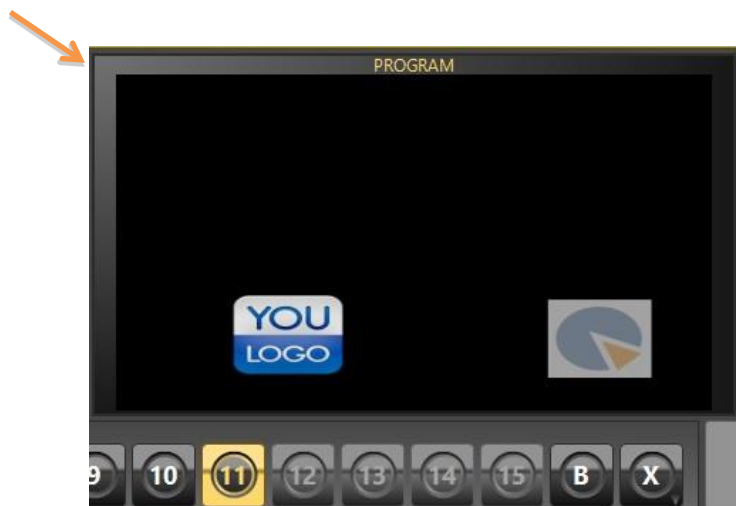
Open the Align menu and move the Logo 1 to bottom.



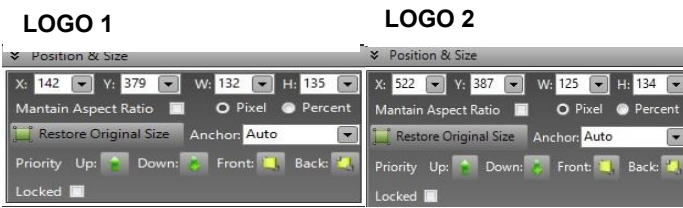
When you start pressing the button you will see the second rectangle moving down following the safe area guides.



Watch the screen!!!



Copy and paste the same object and define its position



4 RESTORE

YOULOGO is provided with a procedure for performing a FACTORY RESTORE on your device in case of need.

ATTENTION: With this procedure, all your data in the C:\ drive will be erased, so we suggest to make a backup copy of the data you want to save before starting with the restore.

After the restore, you need to launch the YouLogoSetup.exe installation file and drivers for configuring again YouLogo's environment.

4.1 PROCEDURE

When starting the device, you can choose between two options:

- **Windows Embedded Standard** (default)
- **Axel Factory Restore**

Select "Axel Factory Restore" and press [ENTER]: a window will appear with the disclaimer conditions and reminding you of making a copy of your data before performing the restore, please read all carefully.

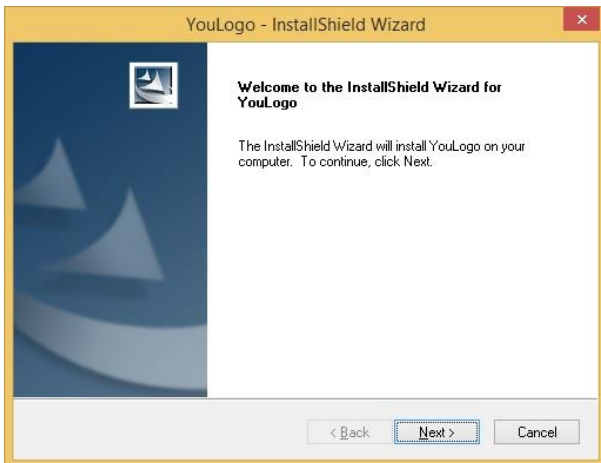
Click on "Reboot" to restart the device and make a backup copy of your data, otherwise tick "I accept all disclaimer conditions" and click on "Restore".

A window will appear asking you to enter a password with the format "axelrestoreXXXX", please contact Axel Technology's technical support who will provide a valid password.

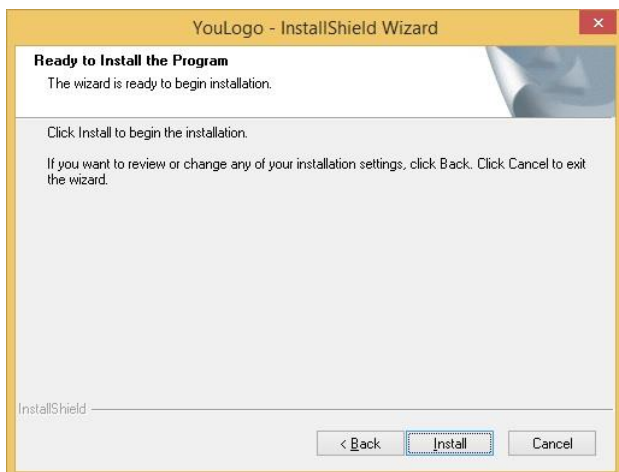
Insert the password and click on OK to start the restore process.

4.2 YOULOGO SETUP

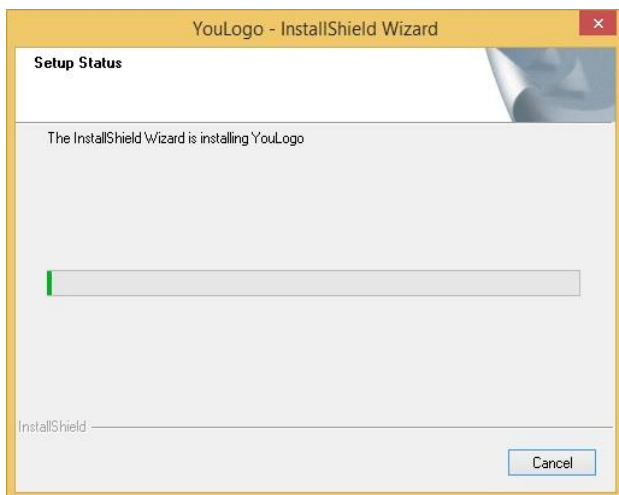
Once the device has been restored, you can reinstall You Logo by "YouLogoSetup.exe" installation file:



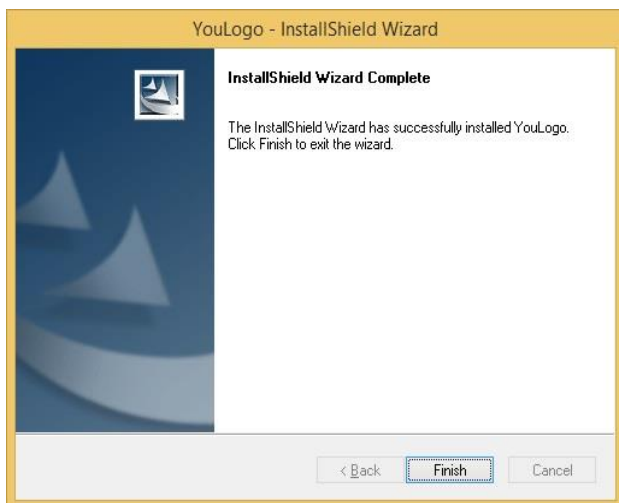
Click on “Next” button:



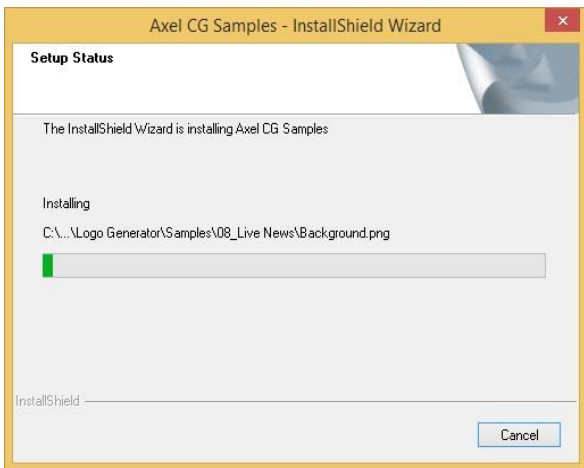
Then, click on “Install” button:



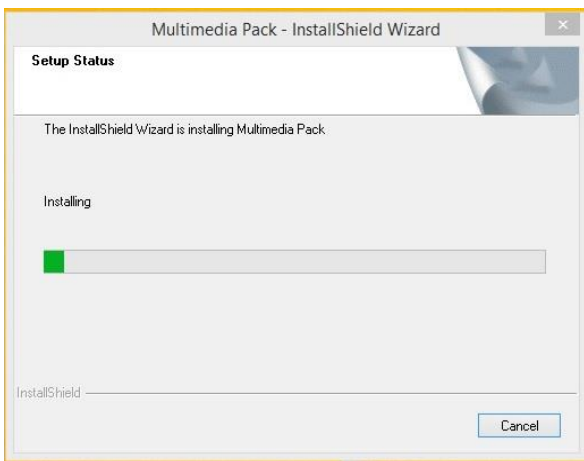
When the YOULOGO installation finishes, click on “Finish” button:



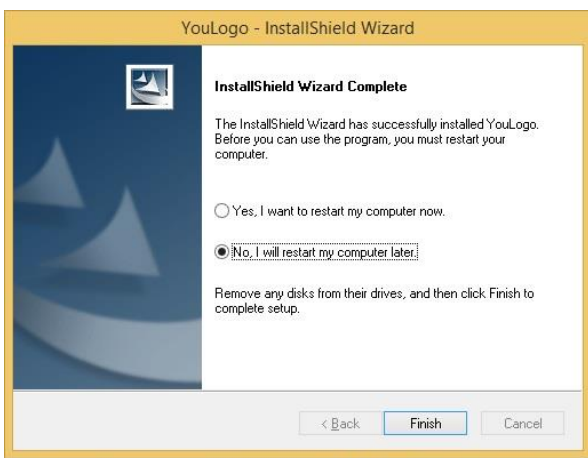
Axel cg samples is going to be installed automatically:



Now, Multimedia Pack is going to be installed automatically:



When Multimedia Pack installation finishes, please set the check on “No, I will restart my computer later” and then click on “Finish” button:



Now, YouLogo software is installed on your pc!

4.3 HARDWARE KEY

You Logo works with a USB hardware key plugged in the internal USB port of the device. If the hardware key is not detected by the system, YouLogo will work on Demo Mode.

