

## CG Live



## Amazing Graphics

**CG Live** is a software based solution for real time character generation. **CG Live** features animated backgrounds, movements and effects on text, images, clocks, animated logos, dates, crawl and news tickers. **CG Live** works via both SDI video boards and via NDI.

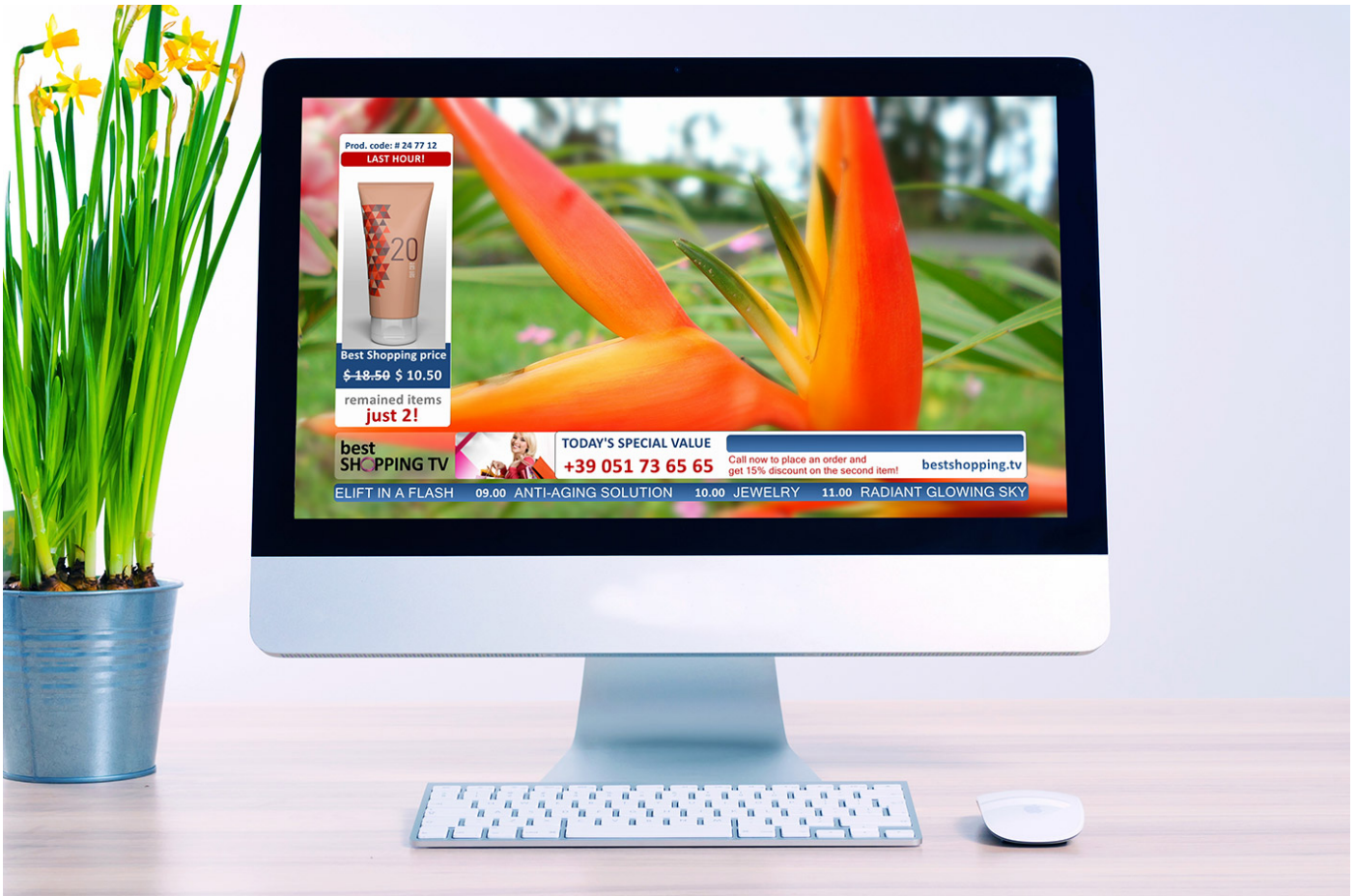
The solution is ideal to display graphical contents, such as text, logos and animations, crawls, tickers and rolls with dynamic contents/metadata retrieved from external data sources, like RSS, txt, Microsoft Excel files and more. Top broadcast quality and easy of use allow **CG Live** to be used for News Graphic, live production in talk shows, sports and entertainment.

**CG Live** is very simple to use and does not need any specific training. Page compositing is also very user friendly and allows to add multiple object like texts, clocks, crawls, rolls and media (audio, bitmaps, video and animations) e and define their specific aspect in detail.



## Broadcast quality

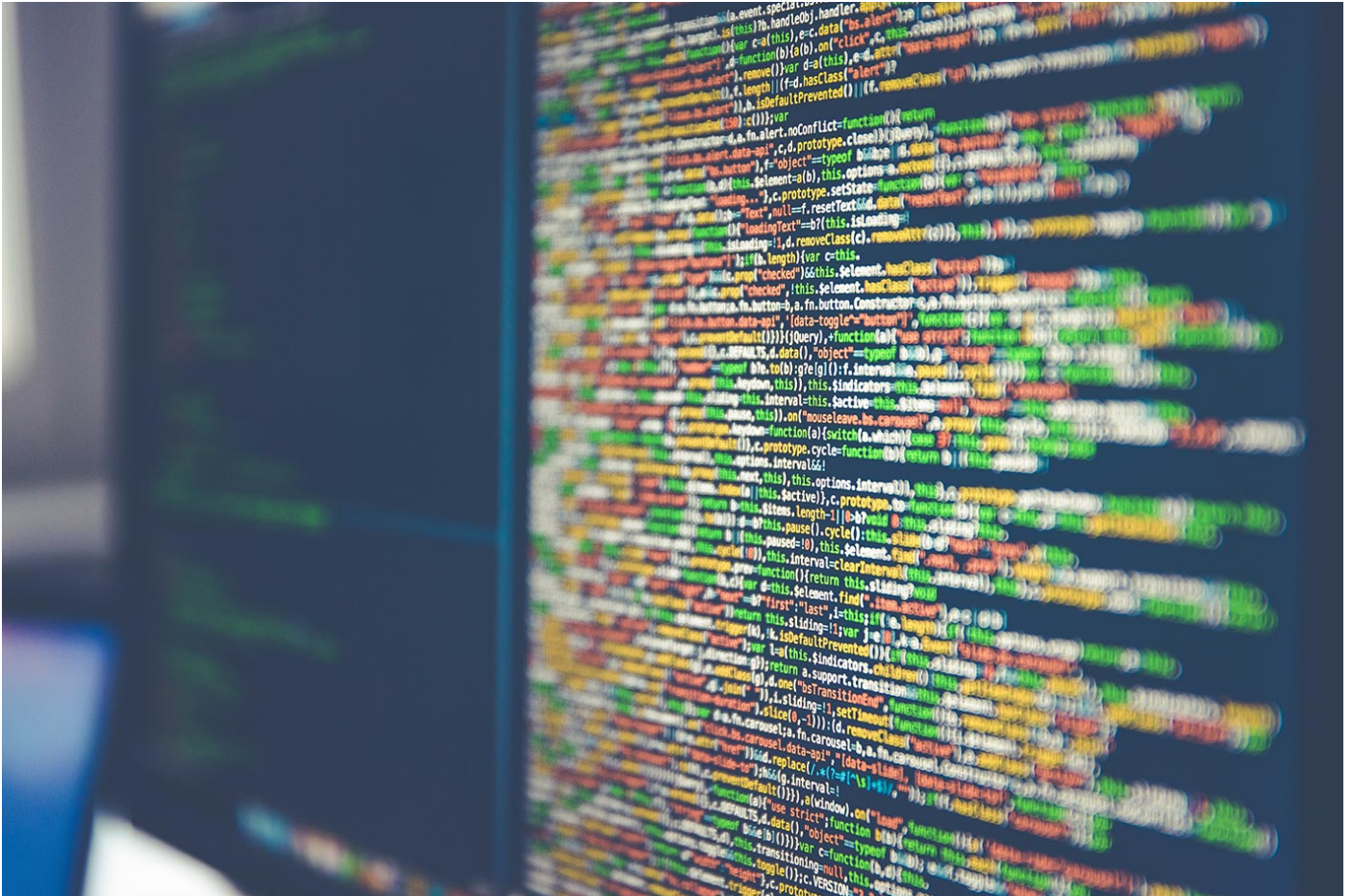
**CG Live** delivers top quality antialiased text, smooth interlaced crawls, tickers and rolls over SDI or NDI output. All layers are managed in 32 bits allowing precise alpha channel and transparency compositing. Text and media can be updated on the fly allowing to perform in live production environments.



## Excel as an App

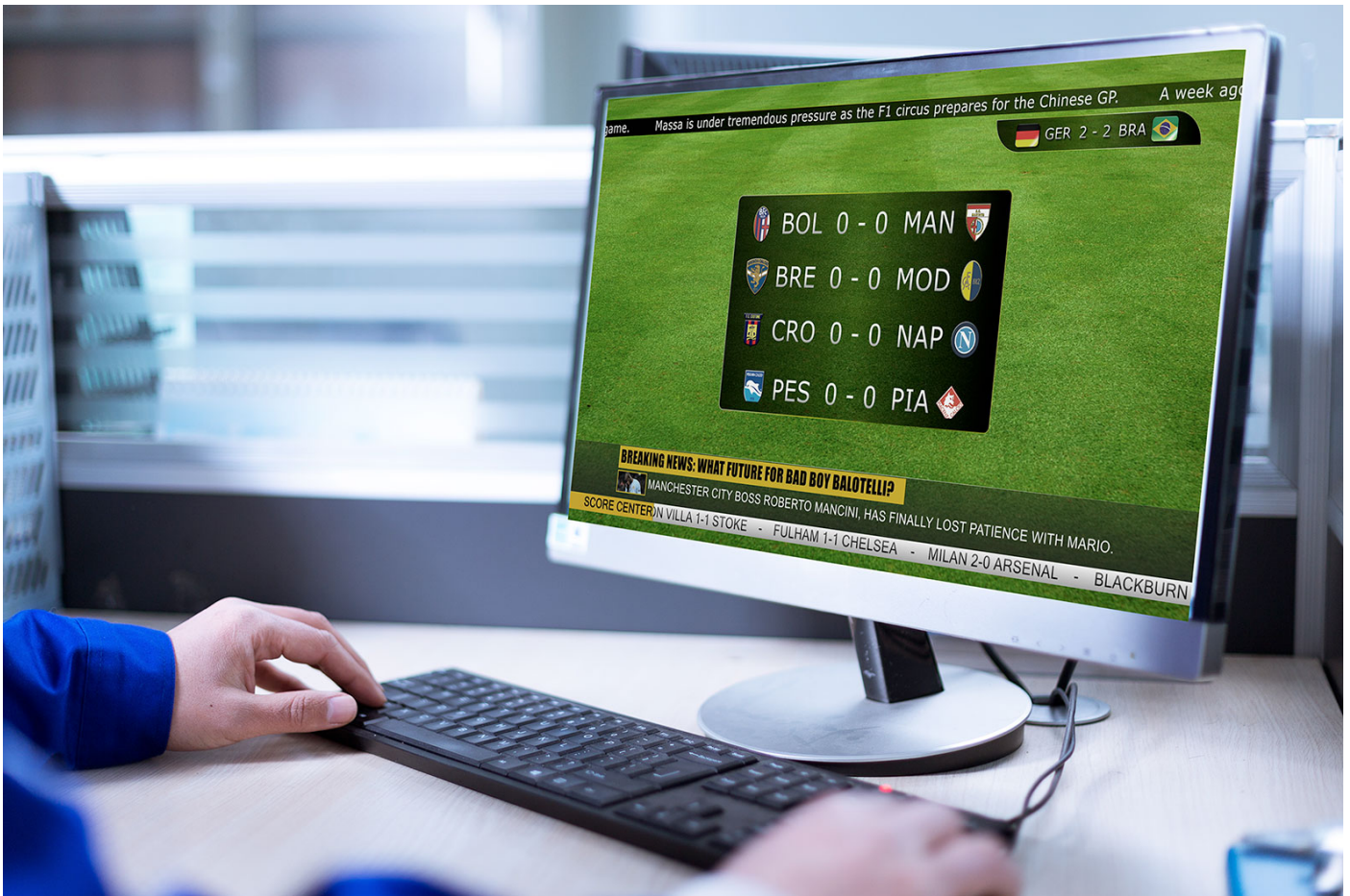
**CG Live** imports data automatically from TXT, CSV, RSS feeds and especially Excel files, so whenever data is updated, it goes straight on air. **CG Live** respects fonts, colors and alignment specified in the Excel files selecting from which sheet and cells to acquire the data. Hidden or unprintable cells will not air, very handy for comments and remarks to the user inputting the data. **CG Live** also respects the formulas and database connections specified in the Excel files, allowing to create custom applications with macros and VBA scripting.





## Social media

**CG Live** integrates with Social Hub (optional), which allows retrieving text, images and video clips from your favourite social media sources, such as whatsapp, facebook, instagram, skype, email, sms, openweathermap, line and rss feeds. User can select and edit messages before airing or create them from scratch. If your favourite social media is not among the supported plugins, a special Google Chrome plugin allows capturing text and images directly from the browser window and send them on air. Social Hub is a great add-on for any live program to add dynamic graphical content to the production and engage more efficiently with the audience.



## Best of Both World

Included in the **CG Live** package is also the **DLG Plus** software, which share the same multimedia engine, allowing interchange of templates and projects. **DLG Plus** features an easy to use videomixer-like user interface so it can be used both in master control as in production environments. According to the type of interactivity which is needed for a specific production, you can choose which application to deploy.





## CG LIVE Features

HD/SD static and animated graphics and logos

Antialiased text with gradients, borders and shadows

Clock, countup/down, date, crawl, ticker and roll

Template editor with multiple layers

Preview channel over VGA and SDI/NDI

TGA, BMP, PNG, TIF, JPG bitmap sequences

Smooth IN/OUT transition: fade, move, zoom

32 Bit images processing with alpha and

Top/bottom/left/right/middle text alignment

Text foreground, border and background with 10 point color and alpha gradients with custom angle

Custom indentation for precise background alignment

Fade in/out, move left/right/top/bottom, squeeze X/Y/XY transitions

Shadows with color, offset and blur which follow animation alpha

Video file animations in bitmap sequences,

transparencies	GIF, quicktime ANIM and Prores 4:4:4:4
GPI on TCP/IP (or Rs-232 as option)	Video files import in DV, HDV, DVCPRO,
Effects: shadow, blur, motion blur, smooth edge (deflicker)	MJPEG, MPEG-2, TS, MPG, VOB, H.264, H.265,
Internal key mode (video in – video out) or external key mode (Key and fill outputs)	AV1, MP4, QuickTime, PRORES, DNxHD, AVI, WMV, ASF, MXF, XDCAM, IMX, GXF, LXF,
Audio output over SDI/NDI in external key mode	FLV, MKV, WebM, HuffYUV, VP8, VC3, JPEG2000, DPX
Infinite layers on each page	Animations and video files in loop/stop at end/ stop at end and hide modes
Social media integration with Social Hub (sold separately)	Automatic upscale/downscale of media as background
Customizable shortcuts for each page	Media on background outputs audio in external key mode
Safe area on page composer	Smooth crawls with area and speed selection
Checkered background on page composer for transparencies highlight	Text, Crawl, roll and ticker datasource from text, CSV, RSS and excel files
On the fly text and media change from user lists	Automatic update of graphics on datasource change
UNICODE texts with double byte language support	Excel file support of font, front/back color, alignment and hyperlinks to media
Right to left language support	Smooth tickers with number of lines, timing and transition type
Automatic text size adaptation to areas	Multiple shapes with color gradients, outlines and rounded corners
TTF fonts support	Date and clock with customizable formatting

Object layering with priority managemen