



>> The Smartest Tool for Your PCR

YouPlay is a powerful software to manage video contribution in PCR. YouPlay can send On-Air any video format during news, talk shows or live events coverage. YouPlay can also feed studio video-walls, featuring clips playout or playlists, play/stop from still frame, animations and much more. YouPlay's user-friendly interface fits perfectly into live productions and it is so intuitive that requires no training.



XTRIMMER



CG COMPOSER



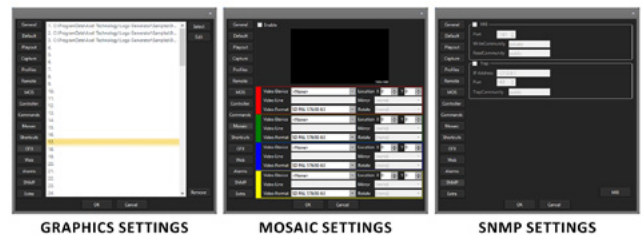
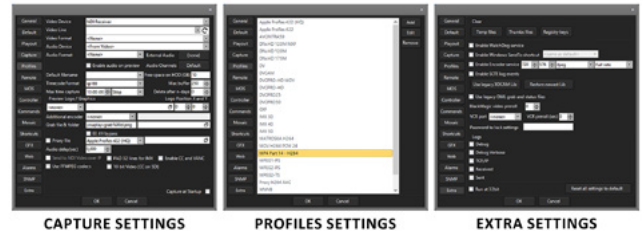
// Overview

General

- SDI/NDI/IP 4K/2K/HD/SD Playout and Ingest (Ingest available on Youplay Server version only);
- Virtually any video and file format compatibility (SD/HD/2K/4K): DV, HDV, DVCPRO, MJPEG, MPEG-2, TS, MPG, VOB, H.264, H.265, AV1, MP4, QuickTime, PRORES, DNxHD, AVI, WMV, ASF, MXF, XDCAM, IMX, GXF, LXF, FLV, MKV, WebM, HuffYUV, VP8, VC3, JPEG2000, DPX and any audio or bitmap file format;
- Up to 16 Audio channels (Dynamic selection of enabled audio channels);
- Automatic Up and Down Scaling and Aspect Ratio adjustment (16/9, 4/3, etc...);
- Mosaic for Video Walls;
- Hardware Compatibility: BMD (SDI), AJA (SDI, SMPTE 2022 & SMPTE 2110), BlueFish (SDI, SMPTE 2022 & SMPTE 2110);
- Key output on SDI with 32 bits Bitmaps sequence, QuickTime Animation and ProRes 4:4:4;
- Timecode RP188-VITC-LTC;
- Crop, field swap, aspect correction mode (Letterbox, no Letterbox, stretch);
- Free CG Composer app for CG template creation;
- Timed CG on playlist with dynamic text metadata;
- Frame accurate single clip loops;
- Slow-motion up to -2x/+2x;
- Play while ingest (on YouPlay Server version only);
- Remote control with BMD Atem, Newtek Tricaster, BMD Hyperdeck Emulation, VDCP mixer, RS422 controller;
- MOS Protocol for Integration with most common Newsroom systems;

Versions

- YouPlay Pro (Playout only)
- YouPlay BRD (Playout only)
- YouPlay Server (Playout and Ingest)



YouPlay settings



For more information
about YouPlay,
visit our website



// Specifications

YouPlay Payout

- Supported Video Cards: BMD DeckLink and Intensity, AJA Corvid, Bluefish
- Resolutions: SD, HD, 2K, 4K (depending on AV card)
- Simultaneous NDI output
- Up to 16 Audio channels
- 10 Bit video output for CC over SDI and ancillary data
- KEY and FILL output (if supported by video card)
- Timecode rp188 and LTC
- SDI inputs, NDI sources and URLs on the playlist
- MOS, RS422, BMD ATEM, NEWTEK TRICASTER, BMD HYPERDECK emulation

GUI

- Channel alias, icon and color
- Preview framerate adjust for RDP optimization
- Customizable shortcuts for CUE, PLAY, FIRST FRAME
- CC on preview
- Drag and Drop of multiple files
- Drag and Drop between Channels
- Single clip position duration and position display
- Total playlist duration and remain display
- First frame positioning
- OSD vu-meters and waveform
- Customizable number of vu-meters
- Realtime video preview
- Customizable skins
- Customizable drag and drop file sorting
- Simple player or graphical/grid playlist GUI
- Independent and sizable GUI for each channel
- 4 channel GUI scaled for 1920x1080 screen

YouPlay Ingest – GUI

- OSD vu-meters and waveform
- Counters for total and segment
- File code and Timecode counters
- Taskbar miniplayer
- User definable shortcuts
- WEB GUI
- Channel label
- Sizable GUI
- Realtime video preview
- Average and instant data rate monitoring
- Space and time left on disk real time calculation
- NDI source selection on main GUI
- OSD display for counters
- Customizable 2-16 channel vu and peak meters

Video Codecs

- MPEG 4 part 2
- Cisco OpenH264
- Intel Quicksync H264
- Nvidia NVEnc H264
- Nvidia NVEnc H264 lossless
- Nvidia NVEnc H265
- MPEG 1
- MPEG 2
- DV
- DVCPRO
- MJPEG
- FLV Sorenson
- HuffYUV
- WMV 8
- Google VP8
- Apple Prores proxy, LT, 422, HQ
- QuickTime ANIM
- Uncompressed 422 8-bit
- Uncompressed 422 10-bit
- DNxHD

- VC3
- OPEN JPEG2000
- DPX

System requirements depend on

- Video payout and capture resolution
- Video codec format
- Number of simultaneous payout/capture/streaming/proxy
- GPU accelerated capture with Nvidia GTX or better and Intel quicksync

File format wrappers

- Mpeg Program (MPG)
- Mpeg Transport (TS)
- MPEG4 part 14 (MP4)
- QuickTime (MOV)
- DNxHD (MOV)
- IMX MPEG4
- MXF
- MXF D-10 (IMX)
- GXF
- DV
- FLV
- DVD VOB
- ASF
- iPod Mp4
- AVI
- Matroska (MKV)
- WebM
- Image Sequence (DPX, PNG, JPG)

Audio codecs

- WAV (16, 24, 32, Cinema, signed, floating etc)
- MP2
- MP3
- AC3 (ATSC A/52A)
- AAC
- ALAC
- ADCPM
- VORBIS

Suggested system requirement

- I7 8700K CPU
- Windows 10
- 16GB RAM
- NVidia GTX

Minimum system requirement

- I3 CPU
- Windows 7
- 4GB RAM

// Specifications